



HAL
open science

Local structure and oxide-ion conduction mechanism in apatite-type lanthanum silicates

Olivier Masson, Abid Berghout, Emilie Bechade, Jenny Jouin, Philippe Thomas, Toru Asaka, Koichiro Fukuda

► To cite this version:

Olivier Masson, Abid Berghout, Emilie Bechade, Jenny Jouin, Philippe Thomas, et al.. Local structure and oxide-ion conduction mechanism in apatite-type lanthanum silicates. *Science and Technology of Advanced Materials*, 2017, 18 (1), pp.644 - 653. 10.1080/14686996.2017.1362939 . hal-01881182

HAL Id: hal-01881182

<https://unilim.hal.science/hal-01881182v1>

Submitted on 12 Sep 2024

HAL is a multi-disciplinary open access archive for the deposit and dissemination of scientific research documents, whether they are published or not. The documents may come from teaching and research institutions in France or abroad, or from public or private research centers.

L'archive ouverte pluridisciplinaire **HAL**, est destinée au dépôt et à la diffusion de documents scientifiques de niveau recherche, publiés ou non, émanant des établissements d'enseignement et de recherche français ou étrangers, des laboratoires publics ou privés.

Local structure and oxide-ion conduction mechanism in apatite-type lanthanum silicates

Olivier Masson^a, Abid Berghout^a, Emilie Béchade^a, Jenny Jouin^a, Philippe Thomas^a, Toru Asaka^b and Koichiro Fukuda^b

^aScience des Procédés Céramiques et de Traitements de Surface (SPCTS), CNRS, Centre Européen de la Céramique, Limoges Cedex, France;

^bDepartment of Environmental and Materials Engineering, Nagoya Institute of Technology, Nagoya, Japan

ABSTRACT

The local structure of apatite-type lanthanum silicates of general formula $\text{La}_{9.33+x}(\text{SiO}_4)_6\text{O}_{2+3x/2}$ has been investigated by combining the atomic pair distribution function (PDF) method, conventional X-ray and neutron powder diffraction (NPD) data and density functional theory (DFT) calculations. DFT was used to build structure models with stable positions of excess oxide ions within the conduction channel. Two stable interstitial positions were obtained in accordance with literature, the first one located at the very periphery of the conduction channel, neighbouring the SiO_4 tetrahedral units, and the second one closer to the channel axis. The corresponding PDFs and average structures were then calculated and tested against experimental PDFs obtained by X-ray total scattering and NPD Rietveld refinements results gathered from literature. It was shown that of the two stable interstitial positions obtained with DFT only the second one located within the channel is consistent with experimental data. This result consolidates one of the two main conduction mechanisms along the *c*-axis reported in the literature, namely the one involving cooperative movement of O4 and O_i ions.

ARTICLE HISTORY

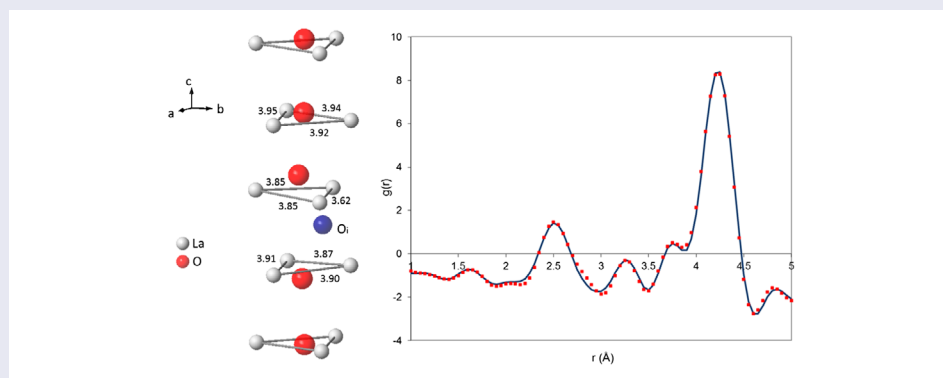
Received 7 May 2017
Revised 29 July 2017
Accepted 31 July 2017

KEYWORDS

Lanthanum silicate; local structure; conduction mechanism; pair distribution function (PDF); density functional theory (DFT)

CLASSIFICATION

50 Energy Materials;
107 Glass and ceramic materials;
207 Fuel cells / Batteries / Super capacitors;
401 1st principle calculations;
504 X-ray / Neutron diffraction and scattering




1. Introduction

Apatite-type lanthanum silicates of general formula $\text{La}_{9.33+x}(\text{SiO}_4)_6\text{O}_{2+3x/2}$ ($0 < x < 0.27$) are promising materials for gas-sensing devices and solid oxide fuel cell (SOFC) electrolytes because of their high oxide-ion conductivities at moderate temperatures as well as at low oxygen partial pressures [1,2]. Their conductivities are strongly anisotropic, more than one order of magnitude larger along the crystalline *c*-axis than perpendicular to it, in the temperature range from 623 K to 848 K [3]. They are also very sensitive to the amount of extra oxide ions present in the structure [4–6]. The conductivities of the $\text{La}_{9.50}(\text{SiO}_4)_6\text{O}_{2.25}$ compound measured at 723–973 K are, for example, larger by a factor of

2.5 with respect to those of the oxygen stoichiometric $\text{La}_{9.33}(\text{SiO}_4)_6\text{O}_2$ compound [6]. Their structure is made of isolated SiO_4 tetrahedral units forming two distinct channels parallel to the *c*-axis (see Figure 1) [7,8]. The smaller of these channels contains La1 lanthanum cations and vacancies, while the larger one, called the conduction channel, contains both La2 lanthanum cations and O4 oxide ions. The O4 ions do not belong to tetrahedral units and instead are located on the channel axis, at the centre of equatorial La2 triangles. The remaining oxide ions (O1–O3) are bonded to Si cations, forming SiO_4 units. The O3 ions border the conduction channels, O1 are a little further away and O2 are the furthest ones.

CONTACT Olivier Masson  olivier.masson@unilim.fr

 The supplemental material for this paper is available online at <https://doi.org/10.1080/14686996.2017.1362939>

© 2017 The Author(s). Published by National Institute for Materials Science in partnership with Taylor & Francis.

This is an Open Access article distributed under the terms of the Creative Commons Attribution License (<http://creativecommons.org/licenses/by/4.0/>), which permits unrestricted use, distribution, and reproduction in any medium, provided the original work is properly cited.

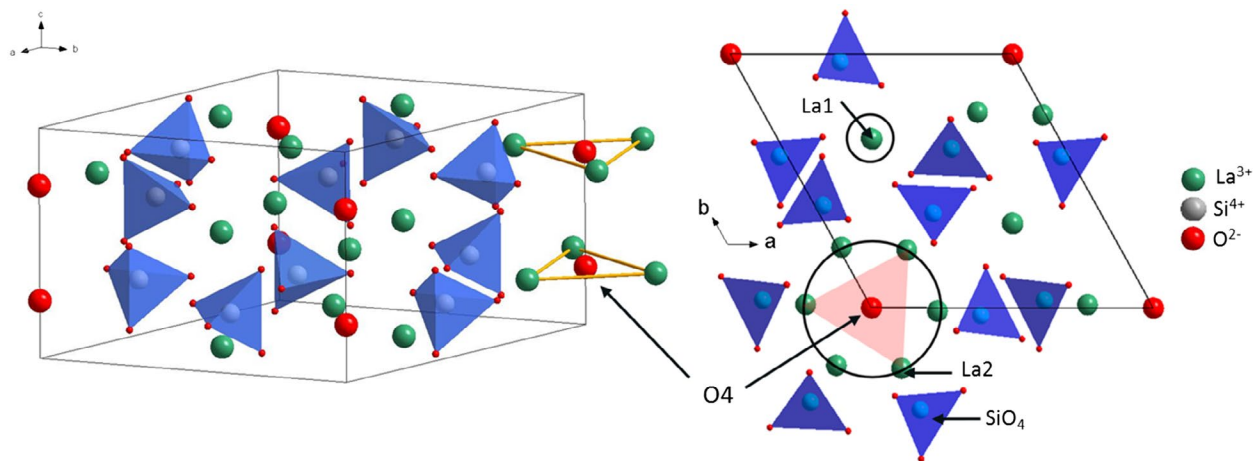


Figure 1. Unit cell of the reference apatite-type lanthanum silicate structure viewed in perspective (left image) and in projection along the c-axis.

Since the first reports of Nakayama et al. [1,2], there have been a number of experimental and computational studies devoted to the understanding of these materials, in particular their conduction mechanism along the c-axis [9–15]. Most results support that conduction along the c-axis involves an interstitial mechanism with interstitial sites located in the conduction channel [9–26]. However, precise answers regarding the exact interstitial mechanism responsible for the high ionic conductivity and the related interstitial sites for excess oxide ions are still unclear, though essential for further improvement of the performance of these materials. Two main mechanisms have been proposed in the literature so far. In a pioneering work, Tolchard et al. [9,10] and Jones et al. [11] proposed, using atomistic simulations, a direct interstitial mechanism involving a ‘sinusoidal-like’ migration pathway connecting interstitial sites O_i located at the periphery of the conduction channel. They showed that the incorporation of interstitial oxide ions should lead to the formation of distorted SiO_5 units bordering the channel. In their mechanism, the migration energy was found to be 0.56 eV, and O4 atoms did not play a direct role. Shortly afterwards, some of the present authors [12] proposed, again using atomistic simulations, a non-collinear interstitialcy mechanism in which interstitial ions cooperatively move with O4 ions along a nonlinear pathway. The calculated migration energy of this mechanism was 0.32 eV, and the interstitial sites O_i were found to be located within the conduction channel, closer to the channel axis. Since then, various studies have argued in favour of one or the other of the mechanisms. For example, recent measurements of the activation energies of the conduction along the c-axis for the $La_{9.33}(SiO_4)_6O_2$ and $La_{9.50}(SiO_4)_6O_{2.25}$ compounds [27] gave values of 0.35 eV, in good agreement with that calculated for the interstitialcy mechanism. Similarly, some first-principles calculations [13–15] and one neutron powder diffraction (NPD) experiment [26] gave

results consistent with the interstitialcy mechanism and its associated interstitial position. On the other hand, a number of experimental structural studies, mainly based on diffraction and NMR experiments, suggested that the interstitial sites were located at the periphery of the conduction channels [18–23]. This is notably the case for a series of NPD studies [18–20,22] performed on various oxygen excess and oxygen-stoichiometric compounds from low (4 K) to higher temperatures (1173 K). In these latter studies, the large atomic displacement parameter (ADP) values obtained for the O3 ions were considered as indicative of the structural disorder induced by channel periphery interstitial ions and were found consistent with fit improvement and Fourier difference map analyses.

The exact positions of the interstitial oxide ions, as well as the related structural distortions, are thus not known yet. And although computational methods are very useful in this respect, experimental evidences remain crucial even if they are often subtle and not univocal. The aim of the present paper is to reinvestigate the location of the interstitial oxide ions by combining the atomic pair distribution function (PDF) method, conventional X-ray and neutron diffraction data and density functional theory (DFT) calculations. DFT is used to build structure models with stable positions of the extra oxide ions in the conduction channel. The corresponding PDFs and average structures are then calculated and tested against experimental PDF obtained by X-ray total scattering and NPD Rietveld refinement results gathered from the literature. Given the relative closeness of the atoms in the conduction channel, the insertion of extra oxide ions should induce detectable local distortions of the structure, affecting not only the closest oxide ions but also lanthanum cations forming the triangles. This should affect the average structure in terms of atomic positions and ADPs, which are assessed by conventional diffraction methods, and also the PDF obtained by X-ray total scattering, which should be

sensitive to the local distortions in the surrounding lanthanum sub-lattice.

2. Experimental details

2.1. Synthesis

Two samples of nominal compositions $\text{La}_{9.33}(\text{SiO}_4)_6\text{O}_2$ and $\text{La}_{9.50}(\text{SiO}_4)_6\text{O}_{2.25}$ were prepared by conventional solid-state reaction from high-purity La_2O_3 (Alfa Aesar, Karlsruhe, Germany; crystalline, 99.99%) and SiO_2 (Prolabo, Coueron, France; amorphous, 99.9%) powders. Small quantities of the starting powders (a total of ~0.2 g) were intimately mixed in the correct ratios using an agate mortar and pestle and then placed in Pt sealed tubes. The whole procedure was performed in a nitrogen dry glove box (MBRAUN, Garching, Germany; $\text{O}_2 < 0.1$ ppm and $\text{H}_2\text{O} < 0.1$ ppm) to avoid the hydration of La_2O_3 . The mixtures were heated first to 1300 °C for 14 h, reground, and then reheated to 1400 °C for a further 14 h to achieve a complete reaction. Phase purity was checked through X-ray powder diffraction (Bruker D8 advance diffractometer with $\text{CuK}\alpha 1$ radiation and rapid LynxEye detector; Wissembourg, France). No impurities, in particular La_2SiO_5 , were detected in either sample (Figure S1, Supporting information).

2.2. Average structure and PDF measurements

The average structures were determined using conventional diffraction data measured on a Bruker D8 advance diffractometer with $\text{CuK}\alpha 1$ radiation and rapid LynxEye detector. Data acquisitions were performed from 17° to 148° (2 θ) with a step size of about 0.01°. Long acquisition time of 72 h was used in order to obtain good counting statistics data. The resulting diffraction data were analysed by the Rietveld method [28] using the program FullProf [29] (the complete program and documentation can be obtained at <http://www.ill.eu/sites/fullprof/>). Atomic positions and anisotropic displacement parameters were refined in space group $\text{P6}_3/\text{m}$. No excess oxide ion was explicitly considered. Occupation factors at the La1 site were refined in order to check the sample compositions.

The PDF of the samples were obtained via X-ray total scattering data measured with a home-made two-axis diffractometer (MoK α radiation, 0.71069 Å, and scintillation counter). For each sample, a few milligrams of powder were placed in a thin-walled (0.01 mm) borosilicate glass capillary of 0.3 mm diameter. Measurements were performed at room temperature from $Q = 0$ to $Q = 17 \text{ \AA}^{-1}$ ($Q = 4\pi\sin\theta/\lambda$) with a step size of 0.02 \AA^{-1} , an acquisition time of 960 s per step and sample rotation about its axis. Additional measurements of the scattering from empty capillary and empty environment were performed in the same conditions for subsequent data corrections. Raw data were treated using a home-made program written in python language. Data were first corrected for capillary and air scattering, absorption, polarization, Compton

scattering, fluorescence and $\text{K}\alpha_2$ radiation. They were then normalized and reduced into the structure function and finally Fourier-transformed into the total PDF.

3. Computational details

3.1. Model construction

Three structure models were constructed, namely the oxygen stoichiometric $\text{La}_{9.33}(\text{SiO}_4)_6\text{O}_2$ model without interstitial oxide-ion (denoted as M1 hereafter) and two different oxygen excess $\text{La}_{9.50}(\text{SiO}_4)_6\text{O}_{2.25}$ models, one with Oi within the channel [12] (denoted as M2) and the other with Oi at the channel periphery [9] and forming SiO_5 unit (M3). Lanthanum vacancies and extra oxide ions were taken into account by creating supercells. A (1×1×3) supercell (i.e. three times the conventional hexagonal unit cell along the c-axis) containing 124 atoms and 2 lanthanum vacancies was used for the $\text{La}_{9.33}(\text{SiO}_4)_6\text{O}_2$ model. For the two $\text{La}_{9.50}(\text{SiO}_4)_6\text{O}_{2.25}$ models, a (1×1×4) supercell containing 167 atoms, including 1 extra oxide ion, and 2 vacancies was used. As suggested in experimental studies [8,18], the two La vacancies were placed at the La1 sites and far away from each other to avoid vacancy clustering. This latter point was furthermore supported by recent DFT calculations on the effects of La vacancy configuration in which interaction between vacancies was shown to be repulsive [13]. The as-obtained starting configurations were then relaxed in order to reach their equilibrium geometries. This was performed in the framework of periodic DFT using the Vienna Ab initio Simulation Package (VASP; Vienna, Austria) [30,31]. VASP is a plane wave basis set code in which the Kohn–Sham equations are solved variationally. It attempts to match the accuracy of the most advanced all-electron codes by using a projector-augmented wave (PAW) approach [32,33] to describe the electron–ion interaction. For the exchange–correlation functional the generalized gradient approximation (GGA) was used in the formulation of Perdew and Wang (PW91) [34,35]. The valence state was treated using 5p, 6s and 5d (no f) orbitals for La, 3s and 3p orbitals for Si and 2s and 2p orbitals for O. Electronic wave functions were expanded up to a cutoff energy of 500 eV, and Brillouin zone integration was performed only at the gamma point to get a good accuracy of less than 1.4 meV per atom. Structure relaxations were carried out by minimizing the Hellmann–Feynman forces to less than 0.02 eV \AA^{-1} using a quasi-Newton method [36], and constraining the metric of the supercells to the hexagonal symmetry ($a = b$, $\alpha = \beta = 90^\circ$, $\gamma = 120^\circ$).

Stable configurations were obtained for the three models. The final supercell obtained for the $\text{La}_{9.33}(\text{SiO}_4)_6\text{O}_2$ model is plotted in Figure 2 as an example. The optimized lattice parameters (given in the conventional hexagonal unit cell) were $a = 9.813 \text{ \AA}$ and $c = 7.269 \text{ \AA}$ for the (1×1×3) supercell and $a = 9.829 \text{ \AA}$ and $c = 7.286 \text{ \AA}$ for the (1×1×4) supercells. These values agree with

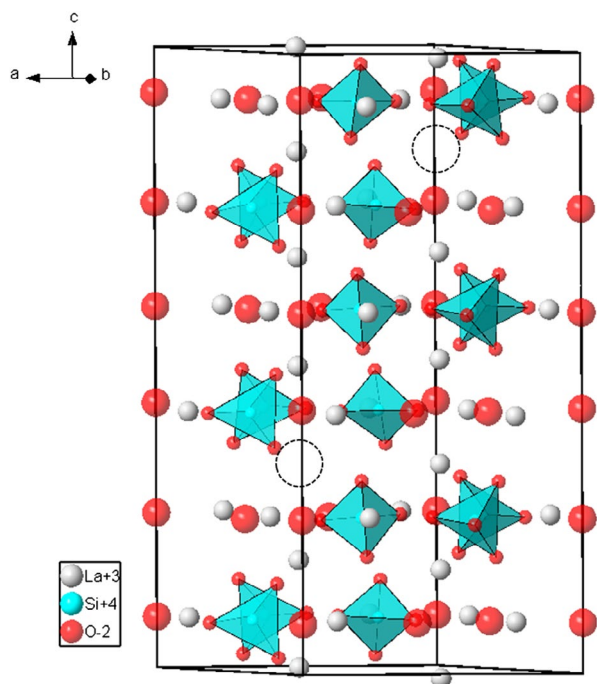


Figure 2. DFT-relaxed $(1 \times 1 \times 3)$ supercell of the $\text{La}_{9.33}(\text{SiO}_4)_6\text{O}_2$ model (M1) used in this study. The empty broken-line circles indicate positions of La1 vacancies.

experimental data to within 1% error. For the model M2, the relaxed position of O_i was found within the channel at coordinates $(-0.001, 0.091, 0.541)$, at 0.37 \AA from previously reported values [12] and at 2.64 \AA and 2.79 \AA from the two neighbouring O_4 ions. The distances between O_i and the three closest O_3 ions are 2.69 \AA , 2.78 \AA and 3.03 \AA . In the model M3, O_i was found at the channel periphery at coordinates $(0.016, 0.223, 0.630)$, at 0.40 \AA from previously reported value [18] and at 2.66 \AA and 3.42 \AA from the two neighbouring O_4 ions. The distances between O_i and the closest O_3 ions (belonging to the SiO_5 unit) are 2.31 \AA and 2.43 \AA . The two next O_i - O_3 distances are 2.78 \AA and 3.13 \AA . The computed energies of the two $(1 \times 1 \times 4)$ supercells were equal to -1392.691237 eV and -1392.603047 eV for models M2 and M3, respectively. The energy of formation of interstitial oxide ions within the channel is thus lower by 0.088 eV , which favours its occurrence with respect to the SiO_5 unit at 0 K . However, the energy difference is small enough to expect that SiO_5 units may form at higher temperature.

3.2. Computation of the PDF and ADPs from the structure models

The three models described in the previous section were used to calculate the corresponding PDFs and ADPs of the asymmetric unit of the average unit cell. The PDFs were computed in the following way. First, the supercell dimensions of the models were adjusted to the experimental values. However, because the calculated and experimental c/a ratios were slightly different only the

a -parameter was exactly adjusted to the experimental value (9.72 \AA), and c was changed homogeneously to a slightly larger value (7.21 \AA). This avoids introducing inhomogeneous distortions in the local structure. Second, the six partial PDFs (corresponding to La-O, Si-O, O-O, La-La and La-Si pairs) were calculated from the models by using the PDFFIT program [37] considering periodic boundary conditions. A small isotropic displacement parameter for each type of atoms ($U_{ii} = 0.005 \text{ \AA}^{-2}$ for La, $U_{ii} = 0.002 \text{ \AA}^{-2}$ for Si and $U_{ii} = 0.003 \text{ \AA}^{-2}$ for O) was also considered in the calculation in order to broaden the PDF peaks in accordance with experiment. This mimics random atomic displacements due to thermal agitation, but not the (anisotropic) static disorder, the latter being contained in the supercells. Third, the partial PDFs were combined in order to obtain the total PDF. In contrast to the case of neutron scattering, the X-ray PDF is not a simple weighted linear combination of partial PDFs in particular for compounds with both heavy and light elements as lanthanum silicates. We treated this problem exactly, using the recent work of two of the present authors [38]. Finally, the effect of two major instrument aberrations (i.e. finite angular resolution and axial divergence of the scattered X-ray beams) was taken into account. Note that given the supercell dimensions and the use of periodic boundary conditions, the as-computed PDFs are not biased by minimum image distances only for correlation lengths lower than about 5 \AA (i.e. half the smallest supercell dimension). This is largely enough for comparison to experimental data and to highlight local structure modifications.

The anisotropic ADPs of the seven atoms (La1, La2, Si, O1, O2, O3 and O4) of the asymmetric unit of the average unit cells were calculated in a more straightforward way. First, the positions of the atoms in the supercell were reduced to positions into a single unit cell (i.e. each supercell was projected onto a single unit cell). Second, the asymmetric unit was built using the 12 symmetry operations of the $P6_3/m$ space group. Third, the average positions and mean-square displacements were computed (excluding the out-of-site O_i atom) for the seven atoms of the asymmetric unit. Last, the as-calculated ADPs were multiplied by a global scaling factor of 1.5 for comparison with experimental values. The algorithm was coded in python language.

4. Results and discussion

4.1. Average structures analysis

The refined structural parameters of the two samples are gathered in Tables 1, 2 and 3. The Rietveld fit is plotted in Figure 3 for the L2 sample only (see Figure S2, Supporting information, for the L1 sample fit). The La1 site occupancy values (Table 1) were refined to $0.847(1)$ and $0.872(1)$ for the samples L1 and L2, respectively. The corresponding chemical formulae are $\text{La}_{9.39}(\text{SiO}_4)_6\text{O}_{2.08}$

Table 1. Reliability factors, cell parameters, La1 site occupancy, chemical formula and La2 triangle area for samples L1 and L2.

Sample	R _{wp} (%)	GofF	a	c	occ _{La1}	Chemical Formula	S _{La2} (Å ²)
L1	3.47	1.13	9.7244(1)	7.1871(1)	0.847(1)	La _{9.39} (SiO ₄) ₆ O _{2.08}	6.88
L2	3.44	1.14	9.7232(1)	7.1839(1)	0.872(1)	La _{9.49} (SiO ₄) ₆ O _{2.23}	6.78

Table 2. Refined atomic coordinates and ADPs (×10⁻² Å²) for sample L1. * U₂₃ of O3 was fixed during refinement.

Site	x	y	z	U ₁₁	U ₂₂	U ₃₃	U ₁₂	U ₁₃	U ₂₃	U _{eq}
La1 (4f)	1/3	2/3	-0.0015(3)	0.71(5)	U ₁₁	2.23(5)	U ₁₁ /2	0	0	1.22(5)
La2 (6 h)	0.0134(1)	0.2431(1)	1/4	0.36(4)	0.61(4)	0.65(2)	0.20(4)	0	0	0.56(3)
Si (6 h)	0.4009(5)	0.3721(4)	1/4	1.0(2)	0.6(2)	0.7(2)	0.4(1)	0	0	0.7(2)
O1 (6 h)	0.323(1)	0.480(1)	1/4	2.1(5)	3.7(7)	0.6(5)	1.8(5)	0	0	1.9(5)
O2 (6 h)	0.590(1)	0.471(1)	1/4	1.2(5)	0.4(3)	1.3(2)	0.3(4)	0	0	1.0(3)
O3 (12i)	0.3438(8)	0.2564(7)	0.0739(7)	5.9(5)	1.4(4)	0.8(3)	1.9(4)	-1.5(3)	-0.3*	2.6(3)
O4 (2a)	0	0	1/4	1.1(8)	U ₁₁	9(1)	U ₁₁ /2	0	0	4(1)

Table 3. Refined atomic coordinates and ADPs (×10⁻² Å²) for sample L2. * U₂₃ of O3 was fixed during refinement.

Site	x	y	z	U ₁₁	U ₂₂	U ₃₃	U ₁₂	U ₁₃	U ₂₃	U _{eq}
La1 (4f)	1/3	2/3	-0.0012(3)	0.71(5)	U ₁₁	1.97(5)	U ₁₁ /2	0	0	1.13(5)
La2 (6 h)	0.0127(1)	0.2411(1)	1/4	0.41(4)	0.80(4)	0.69(2)	0.22(4)	0	0	0.67(3)
Si (6 h)	0.4027(5)	0.3727(4)	1/4	1.1(2)	0.6(2)	0.4(1)	0.5(1)	0	0	0.7(2)
O1 (6 h)	0.325(1)	0.484(1)	1/4	1.9(5)	4.2(7)	0.8(5)	2.6(5)	0	0	1.9(5)
O2 (6 h)	0.591(1)	0.471(1)	1/4	1.8(5)	0.7(4)	1.2(5)	0.6(4)	0	0	1.3(4)
O3 (12i)	0.3459(8)	0.2578(7)	0.0730(7)	6.2(5)	2.6(4)	1.6(4)	2.7(4)	-1.9(3)	-0.3*	3.3(4)
O4 (2a)	0	0	1/4	0.9(7)	U ₁₁	25(2)	U ₁₁ /2	0	0	9(1)

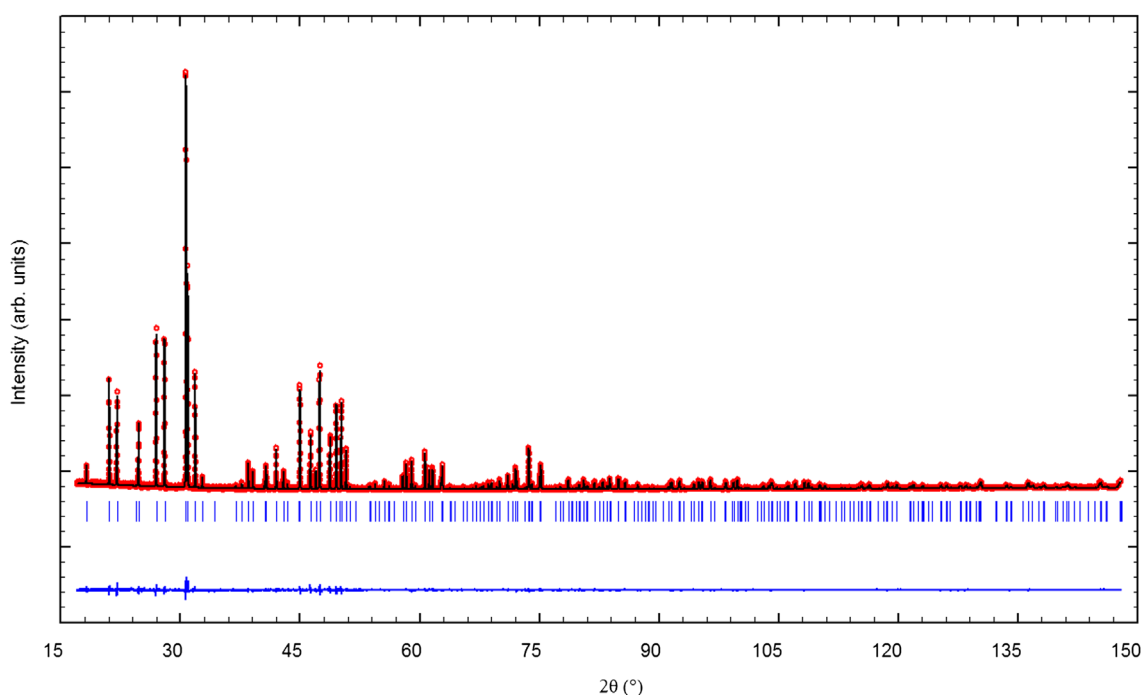


Figure 3. Rietveld fit for the L2 sample: observed (open circle), calculated (solid line) and difference patterns.

and La_{9.49}(SiO₄)₆O_{2.23}. These values are reasonably close to the nominal compositions and confirm that L2 contains more oxide ions in the conduction channel than L1. They also indicate that L1 is not perfectly oxygen stoichiometric as expected but exhibits some amount of excess oxygen. It can be observed from Table 1 that the cell parameters decrease from L1 to L2 with a larger decrease for the c-parameter, and the La2 triangle area

clearly decreases with increasing oxygen excess content as previously reported in the literature [5].

The refined ADPs are reported in Tables 2 and 3. Relatively high values are observed for the La1, O1, O3 and O4 sites. The highest values for lanthanum atoms correspond to U₃₃ of La1. It slightly decreases from L1 to L2 samples, emphasizing its connection with the presence of lanthanum vacancies at this site. As previously proposed

in the literature [18,19,22], the main ADPs that are useful to detect local disorder in the conduction channel are U_{11} of O3 and U_{33} of O4. For both samples, U_{11} values of O3 are large and almost equal within experimental error. In contrast, a significant difference between the two samples is observed for U_{33} of O4, with about $9 \times 10^{-2} \text{ \AA}^{-2}$ for sample L1 to a huge value of $25 \times 10^{-2} \text{ \AA}^{-2}$ for L2.

In Table 4 are reported ADP values from the literature measured by NPD at room and at low (15 K) temperature [18,22] for the $\text{La}_{9,33}(\text{SiO}_4)_6\text{O}_2$ and $\text{La}_{9,55}(\text{SiO}_4)_6\text{O}_{2,32}$ compounds. Very similar ADP values measured by NPD at 3 K (not reported herein) were also obtained for the $\text{La}_{9,67}(\text{SiO}_4)_6\text{O}_{2.5}$ compound [26]. All these values are expected to be particularly precise for oxygen atoms and give valuable information relative to static and thermal disorder. As for samples L1 and L2, the highest values are observed for the La1, O1, O3 and O4 sites. For the $\text{La}_{9,33}(\text{SiO}_4)_6\text{O}_2$ sample, the small differences observed between the ADPs measured at room and low temperatures for the La1, O1 and O3 sites suggest that the corresponding positional disorder is mainly of static nature. For the O4 site, the difference between the room and low temperature U_{33} values is higher, indicating a larger contribution of thermal disorder. However, U_{33} of O4 at 15 K is relatively large ($1.7 \times 10^{-2} \text{ \AA}^2$) so that static disorder is not negligible. Regarding the $\text{La}_{9,55}(\text{SiO}_4)_6\text{O}_{2,32}$ sample, the main change concerns U_{33} of O4, which increases to a very high value of $21.1 \times 10^{-2} \text{ \AA}^2$. Furthermore, the value of U_{33} of O4 is only slightly larger at 773 K [18], with a value of $22.6 \times 10^{-2} \text{ \AA}^2$, suggesting that the corresponding disorder is again mainly of static nature.

These values can now be compared to the ADPs calculated from the three models M1, M2 and M3 described in previous sections. All the calculated values are gathered in Table 5. It can be observed that about half of the calculated ADPs are close to zero and the other half are large.

As already noticed, the calculated ADPs are indicative of static disorder only. Thus, small calculated values indicate that ADPs are mainly influenced by thermal motion of atoms, and large values (in bold in Tables 4 and 5), related to the La1, O1, O3 and O4 sites, indicate that ADPs are more influenced by static disorder in the structures. These latter values match well on average with experimental values. Regarding first the model M1, the calculated U_{33} of O4 ($2.4 \times 10^{-2} \text{ \AA}^2$) is consistent with the experimental value measured at 15 K ($1.7 \times 10^{-2} \text{ \AA}^2$). This confirms that static disorder is already present in the structure without an interstitial oxide ion. Indeed, O4 never exactly lies in the centre of the La2 triangle but is systematically shifted upward or downward along the c-axis (this is discernible in Figure 2). More interestingly, the calculated U_{11} value of O3 ($3.6 \times 10^{-2} \text{ \AA}^2$) is high and compares well with experiment. The associated static disorder, clearly seen on Figure 2, corresponds to large displacements of O3 ions along the a-axis induced by silicate tetrahedra tilts. Thus, in contrast to what was proposed in the literature [18,22], the large experimental value of U_{11} is not the signature of interstitial oxide ions at the periphery of the conduction channel but is mainly the signature of the intrinsic disorder in the oxygen stoichiometric structure. The same reasoning applies to the O1 site but to a lesser extent as this site is farther from the conduction channel than O3.

Comparing the two models M2 and M3 of the $\text{La}_{9,50}(\text{SiO}_4)_6\text{O}_{2,25}$ compound with respect to the model M1, major differences appear for the O3 and O4 sites. With model M2, the ADP values of O3 slightly increase and the U_{33} value of O4 rises dramatically to $22.4 \times 10^{-2} \text{ \AA}^2$. The opposite behaviour is observed for the M3 model, namely a slight increase of U_{33} of O4 and a large increase of all O3 ADPs. Clearly, the M2 model is consistent with experiment, and its ADP values compare particularly well with the experimental ones. In contrast, the ADP values of the model M3

Table 4. ADP values ($\times 10^{-2} \text{ \AA}^2$) from the literature obtained by neutron diffraction at room temperature for $\text{La}_{9,33}(\text{SiO}_4)_6\text{O}_2$ [22] and $\text{La}_{9,55}(\text{SiO}_4)_6\text{O}_{2,32}$ [18]. Values in parentheses given for the highest ADP were obtained at 15 K [22].

Site	$\text{La}_{9,33}(\text{SiO}_4)_6\text{O}_2$ [22]						$\text{La}_{9,55}(\text{SiO}_4)_6\text{O}_{2,32}$ [18]					
	U_{11}	U_{22}	U_{33}	U_{12}	U_{13}	U_{23}	U_{11}	U_{22}	U_{33}	U_{12}	U_{13}	U_{23}
La1	0.3	U_{11}	2.4(2.1)	$U_{11}/2$	0	0	0.8	U_{11}	2.5	$U_{11}/2$	0	0
La2	0.6	0.2	0.3	0.1	0	0	1.0	0.5	0.5	0.2	0	0
Si	0.5	0.1	0.8	0.3	0	0	0.8	0.4	0.7	0.6	0	0
O1	2.2(2.9)	2.3(2.2)	1.7(0.8)	2.0(2.2)	0	0	2.7	2.8	1.8	2.3	0	0
O2	0.7	0.4	2.0(1.4)	0.2	0	0	0.9	0.7	2.0	0.4	0	0
O3	4.5(3.8)	0.9(0.9)	1.1(0.6)	1.3(1.1)	$-1.5(-1.5)$	$-0.6(-0.5)$	4.8	1.5	1.3	1.7	-1.7	-0.8
O4	0.3	U_{11}	6.7(1.7)	$U_{11}/2$	0	0	0.5	U_{11}	21.1	$U_{11}/2$	0	0

Table 5. ADP values ($\times 10^{-2} \text{ \AA}^2$) calculated from the structure models M1, M2 and M3 presented in this paper.

Site	$\text{La}_{9,33}(\text{SiO}_4)_6\text{O}_2$ model M1						$\text{La}_{9,50}(\text{SiO}_4)_6\text{O}_{2,25}$ model M2 (with O_i within the channel)						$\text{La}_{9,50}(\text{SiO}_4)_6\text{O}_{2,25}$ model M3 (with O_i forming SiO_5 unit)					
	U_{11}	U_{22}	U_{33}	U_{12}	U_{13}	U_{23}	U_{11}	U_{22}	U_{33}	U_{12}	U_{13}	U_{23}	U_{11}	U_{22}	U_{33}	U_{12}	U_{13}	U_{23}
La1	0.0	0.0	3.5	0.0	0	0	0.2	0.2	2.4	0.1	0	0	0.6	0.6	2.5	0.3	0	0
La2	0.0	0.0	0.2	0.0	0	0	0.3	0.2	0.9	-0.1	0	0	0.6	0.2	0.8	0.1	0	0
Si	0.0	0.1	0.1	0.0	0	0	0.2	0.3	0.2	0.2	0	0	0.2	0.2	0.6	0.1	0	0
O1	1.0	1.6	1.7	1.1	0	0	1.4	1.8	2.3	1.4	0	0	1.5	1.9	2.7	1.5	0	0
O2	0.1	0.3	0.5	-0.2	0	0	0.3	0.3	1.4	-0.1	0	0	0.3	0.4	1.6	-0.1	0	0
O3	3.6	0.3	0.6	0.7	-1.4	-0.3	4.2	1.1	1.0	1.7	-1.8	-0.7	7.1	5.0	1.7	4.8	-3.2	-2.4
O4	0.0	0.0	2.4	0.0	0	0	0.8	0.8	22.4	0.4	0	0	1.1	1.1	3.4	0.5	0	0

give the largest discrepancies with respect to experiment. The observed increase of U_{33} of O4 is thus the signature of interstitial oxide ions within the channel. Interstitial oxide ions at the periphery of the channel would induce no significant increase of U_{33} of O4 and a much larger increase of O3 ADP values than experimentally observed.

4.2. Atomic pair distribution functions analysis

The experimental PDFs of the two samples are plotted, in the range $1 < r < 5 \text{ \AA}$, in Figure 4. They both exhibit features typical of the lanthanum silicate structure. The first peak at about 1.62 \AA corresponds to Si-O bond lengths. The second peak, broader than the first one and centred at about 2.50 \AA , corresponds to La-O bond lengths. The third peak at 3.25 \AA corresponds to La-Si shortest distances. The peaks corresponding to O-O distances are not noticeable. The most intense peak at about 4.20 \AA corresponds mainly to La-La distances with a small contribution of La-O distances. The shoulder at 3.80 \AA is composed of La-La and La-Si distances. As expected, the differences between the two PDFs are small and related to correlation lengths involving heavy lanthanum atoms. The L2 sample exhibits a higher shoulder at 3.80 \AA and a lower peak at 4.20 \AA with respect to the L1 sample.

The experimental PDF of the sample L1 is compared to that calculated from model M1 in Figure 5. The agreement between the two curves is very good, especially since no refinement was performed (only three isotropic displacement parameters were adjusted). The main discrepancy is related to the shoulder at 3.80 \AA , which appears at too large r values for the model with respect to experiment. However, this difference is small, and it should be remembered that the L1 sample contains a small amount of excess oxygen. Overall, these results confirm that DFT is able to produce good-quality structure models independently of experimental data and that our models capture most of the interatomic distances present in the real lanthanum silicate structure.

The experimental PDF of the sample L2 is now compared to the PDF calculated from the model M2 and M3 in Figure 6. Differences are clearly visible between the two models. The model M2 is able to reproduce accurately both the heights and positions of the shoulder at 3.80 \AA and the peak at 4.20 \AA . This is not the case with the model M3, which produces too low a shoulder at 3.80 \AA and slightly too broad a peak at 4.20 \AA . The determination of the exact change in La-La correlations responsible for the correct evolution from samples L1 to L2 requires a close inspection of the structure models around the conduction channel, in particular the L2 triangle surrounding the O4 sites. The perspective views of the conduction channel, showing the O4 oxide ions, the La2 lanthanum triangles, the Oi interstitial oxide ion and some triangle edge lengths for the models M2 and M3 are plotted in Figure 7.

Again, differences between the models M2 and M3 are clearly visible. In the model M2, the interstitial oxide ion pushes nearby O4 ions far away from the La2 triangle centres. This not only induces the large U_{33} value discussed in the previous section but also induces a contraction of the La2 triangles and a large shortening of the La2-La2 edges. The calculated average La2 triangle area is 6.74 \AA^2 . It compares very well with that measured for sample L2 (6.78 \AA^2). In addition, over the 24 triangle edges of the M2 supercell, 4 edges have length smaller than 3.90 \AA , resulting in about 17% of edges with an average length of 3.80 \AA instead of 4.02 \AA as found in model M1. Thus, when inserting excess oxide ions within the channel (from M1 to M2), 17% of the La-La distances that were contributing to the left side of the peak at 4.20 \AA in model M1 contribute henceforth in model M2 to the shoulder at 3.80 \AA . This explains the higher shoulder at 3.80 \AA and a lower peak at 4.20 \AA observed for the PDF of the model M2 and sample L2 with respect to the model M1 and sample L1. The model M3 is clearly unable to explain these observations. Only small changes are observed in the conduction channel. The shortening of a single triangle edge is partly compensated by the

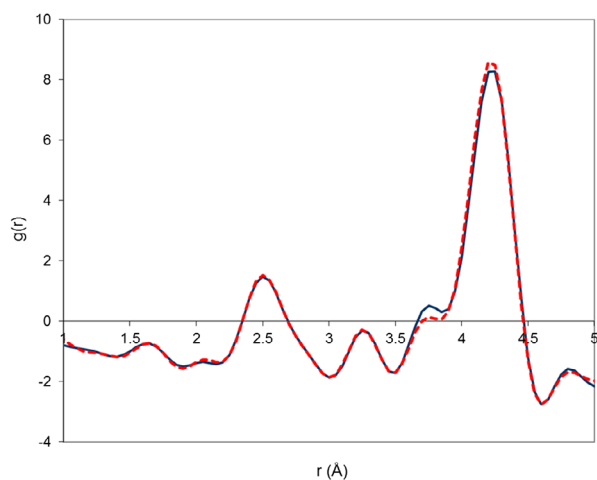


Figure 4. Experimental PDF of sample L1 (dashed line) and sample L2 (solid line) measured by X-ray total scattering.

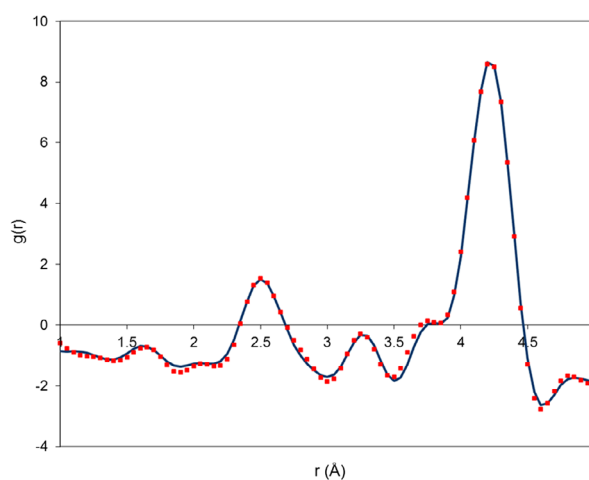


Figure 5. Experimental PDF of sample L1 (squares) and PDF calculated from model M1 (solid line).

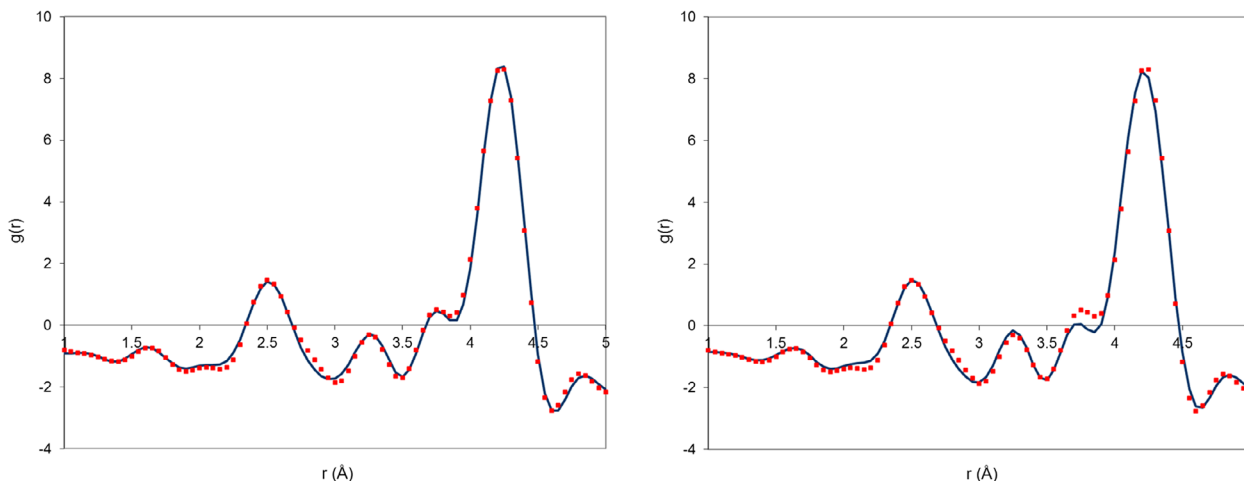


Figure 6. Experimental PDF of sample L2 (squares) compared to PDF calculated (solid line) from model M2 (left image) and model M3 (right image).

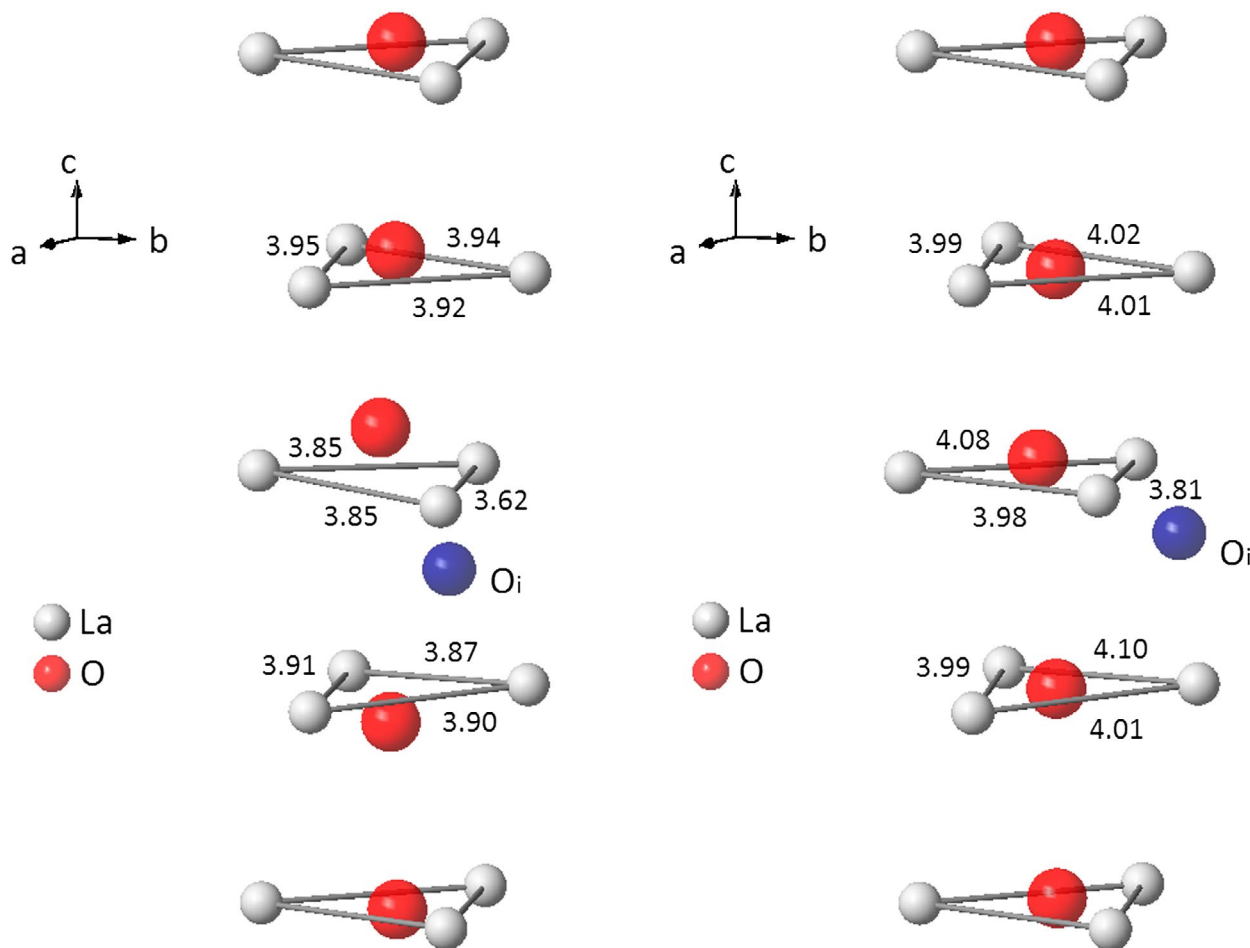


Figure 7. Perspective views of the conduction channel, showing the O4 oxide ions, the La2 lanthanum triangles, the O_i interstitial oxide ion and some triangle edge lengths for model M2 (left image) and model M3 (right image).

lengthening of another, so that the calculated average triangle area is 7.02 \AA^2 , significantly larger than that measured for sample L2. For the sake of completeness, it should be pointed out that the increase of the number of La1 atoms, going from compositions $\text{La}_{9.33}(\text{SiO}_4)_6\text{O}_2$ to $\text{La}_{9.50}(\text{SiO}_4)_6\text{O}_{2.25}$, induces a small decrease of the average La1-La1 closest distances, which goes from 3.73 \AA in

the model M1 to 3.69 \AA in the models M2 and M3. This explains the small shift of the shoulder at 3.80 \AA towards lower r values.

The results presented so far all indicate that the structural changes induced by incorporating excess oxygen in the lanthanum silicate structure are consistent with interstitial oxide ions located within the conduction

channel and not at its periphery. This, in turn, is consistent with the interstitialcy diffusion mechanism along the *c*-axis involving cooperative movement of O4 and Oi ions [12]. It should also be kept in mind that the present results are based on calculations or experiments corresponding to relatively low temperatures (0 K for calculations and mostly 15 K and room temperature for experimental data) with respect to the operating temperatures of SOFC. Thus, it is not excluded that other conduction mechanisms may also occur in operating conditions, in particular those favouring the formation of SiO₅ units or even more complex ones such as the one reported recently in literature [15].

5. Conclusions

We have investigated the local structure of apatite-type lanthanum silicates by combining the PDF method, conventional X-ray and neutron diffraction data and DFT calculations. It was shown that DFT is able to produce, independently of experimental data, good-quality structure models which capture the disorder present in the lanthanum silicate compounds. It was also shown that both the average and local structures of the La_{9.50}(SiO₄)₆O_{2.25} compound are best represented by the model M2, with Oi within the conduction channel and not at its periphery. With this model, the experimental ADP values of the O3 and O4 ions are well explained. The high observed value of U₃₃ of O4 appears to be the key signature of interstitial oxide ions within the channel. In addition, the large observed U₁₁ value of O3 is shown not to be the signature of an interstitial ion located at the periphery of the channel as reported in literature. An interstitial ion located at the channel periphery would indeed induce a much larger increase of O3 ADP values than experimentally observed. It also appears that the interstitial oxide ions within the channel not only induce the large U₃₃ value of O4 but also a contraction of the La2 triangles and a large shortening of the La2-La2 edges. This explains perfectly the La2 triangle area measured experimentally and the height of the experimental PDF shoulder at 3.80 Å.

Thus, the obtained results all indicate that the structural changes measured by diffraction methods and reported in literature or in the present study are consistent with interstitial oxide ions located within the conduction channel and not at its periphery. This, in turn, is consistent with a conduction mechanism along the *c*-axis involving cooperative movement of O4 and Oi ions. As already stated, it should also be kept in mind that the present results are based on calculations or experiments corresponding to relatively low temperatures (0 K for calculations and mostly 15 K and room temperature for experimental data) with respect to the operating temperatures of SOFC. Thus, it is not excluded that other conduction mechanisms may also occur in operating conditions.

Acknowledgments

This work was supported by a CNRS International Scientific Collaborative Project (PICS) between SPCTS laboratory and Nagoya Institute of Technology.

Disclosure statement

No potential conflict of interest was reported by the authors.

References

- [1] Nakayama S, Kageyama T, Aono H, et al. Ionic conductivity of lanthanoid silicates, Ln₁₀(SiO₄)₆O₃ (Ln = La, Nd, Sm, Gd, Dy, Y, Ho, Er and Yb). *J Mater Chem.* 1995;5:1801–1805.
- [2] Nakayama S, Sakamoto M. Electrical properties of new type high oxide ionic conductor RE₁₀Si₆O₂₇ (RE=La, Pr, Nd, Sm, Gd, Dy). *J Eur Ceram Soc.* 1998;18:1413–1418.
- [3] Fukuda K, Asaka T, Okino M, et al. Anisotropy of oxide-ion conduction in apatite-type lanthanum silicate. *Solid State Ionics.* 2012;217:40–45.
- [4] Yoshioka H. Oxide ionic conductivity of apatite-type lanthanum silicates. *J Alloys Compd.* 2006;408:649–652.
- [5] Yoshioka H. Enhancement of ionic conductivity of apatite-type lanthanum silicates doped with cations. *J Am Ceram Soc.* 2007;90:3099–3105.
- [6] Fukuda K, Asaka T, Oyabu M, et al. Crystal structure and oxide-ion conductivity along *c*-axis of apatite-type lanthanum silicate with excess oxide ions. *Chem Mater.* 2012;24:4623–4631.
- [7] Kuz'min EA, Belov NV. Crystal structure of simplest silicates of La and Sm. *Doklady Akademii Nauk SSSR.* 1965; 165 (1); 88–90.
- [8] Okudera H, Masubuchi Y, Kikkawa S, et al. Structure of oxide ion-conducting lanthanum oxyapatite, La_{9.33}(SiO₄)₆O₂. *Solid State Ionics.* 2005;176:1473–1478.
- [9] Tolchard JR, Islam MS, Slater PR. Defect chemistry and oxygen ion migration in the apatite-type materials La_{9.33}Si₆O₂₆ and La₈Sr₂Si₆O₂₆. *J Mater Chem.* 2003;13:1956–1961.
- [10] Islam MS, Tolchard JR, Slater PR. An apatite for fast oxide ion conduction. *Chem Commun.* 2003;13:1486–1487.
- [11] Jones A, Slater PR, Islam MS. Local defect structures and ion transport mechanisms in the oxygen-excess apatite La_{9.67}(SiO₄)₆O_{2.5}. *Chem Mater.* 2008;20:5055–5060.
- [12] Béchade E, Masson O, Iwata T, et al. Diffusion path and conduction mechanism of oxide ions in apatite-type lanthanum silicates. *Chem Mater.* 2009;21:2508–2517.
- [13] Liao T, Sazaki T, Suehara S, et al. Position preference and diffusion path of an oxygen ion in apatite-type lanthanum silicate La_{9.33}Si₆O₂₆: a density functional study. *J Mater Chem.* 2011;21:3234–3242.
- [14] Matsunaga K, Toyoura K. First-principles analysis of oxide-ion conduction mechanism in lanthanum silicate. *J Mater Chem.* 2012;22:7265–7273.
- [15] Imaizumi K, Toyoura K, Nakamura A, et al. Strong correlation in 1D oxygen-ion conduction of apatite-type lanthanum silicate. *J Phys Condens Matter.* 2015;27:365601.
- [16] Sansom J, Richings D, Slater PR. A powder neutron diffraction study of the oxide-ion-conducting apatite-type phases, La_{9.33}Si₆O₂₆ and La₈Sr₂Si₆O₂₆. *Solid State Ionics.* 2001;139:205–210.

- [17] Yoshioka H, Nojiri Y, Tanase S. Ionic conductivity and fuel cell properties of apatite-type lanthanum silicates doped with Mg and containing excess oxide ions. *Solid State Ionics*. 2008;179:2165–2169.
- [18] Leon-Reina L, Losilla ER, Martínez-Lara M, et al. Interstitial oxygen conduction in lanthanum oxyapatite electrolytes. *J Mater Chem*. 2004;14:1142–1149.
- [19] Leon-Reina L, Losilla ER, Martínez-Lara M, et al. Interstitial oxygen in oxygen-stoichiometric apatites. *J Mater Chem*. 2005;15:2489–2498.
- [20] León-Reina L, Porras-Vázquez JM, Losilla ER, et al. Interstitial oxide positions in oxygen-excess oxyapatites. *Solid State Ionics*. 2006;177:1307–1315.
- [21] Sansom JEH, Tolchard JR, Islam MS, et al. Solid state ^{29}Si NMR studies of apatite-type oxide ion conductors. *J Mater Chem*. 2006;16:1410–1413.
- [22] Leon-Reina L, Porras-Vasquez JM, Losilla ER, et al. Low temperature crystal structures of apatite oxygen-conductors containing interstitial oxygen. *Dalton Transactions*. 2007;414:2058–2064.
- [23] Tolchard JR, Slater PR. A high temperature powder neutron diffraction structural study of the apatite-type oxide ion conductor, $\text{La}_{9.67}\text{Si}_6\text{O}_{26.5}$. *J Phys Chem Solids*. 2008;69:2433–2439.
- [24] Ali R, Yashima M, Matsushita Y, et al. Diffusion path of oxide ions in an apatite-type ionic conductor $\text{La}_{9.69}(\text{Si}_{5.70}\text{Mg}_{0.30})\text{O}_{26.24}$. *Chem Mater*. 2008;20:5203–5208.
- [25] Matsushita Y, Izumi F, Kobayashi K, et al. Powder neutron diffraction of La-apatite under low temperature. *Nucl Instr Meth Phys Res*. 2009;600:319–321.
- [26] Guillot S, Beaudet-Savignat S, Lambert S, et al. Evidence of local defects in the oxygen excess apatite $\text{La}_{9.67}(\text{SiO}_4)_6\text{O}_{2.5}$ from high resolution neutron powder diffraction. *J Solid State Chem*. 2009; 182: 3358–3364.
- [27] Fukuda K, Asaka T, Hamaguchi R, et al. Oxide-ion conductivity of highly *c*-axis-oriented apatite-type lanthanum silicate polycrystal formed by reactive diffusion between La_2SiO_5 and $\text{La}_2\text{Si}_2\text{O}_7$. *Chem Mater*. 2011;23:5474–5483.
- [28] Rietveld HM. A profile refinement method for nuclear and magnetic structures. *J Appl Cryst*. 1969;2(2):65–71.
- [29] Rodríguez-Carvajal J. Recent advances in magnetic structure determination by neutron powder diffraction. *Physica B*. 1993;192(1-2):55–69.
- [30] Kresse G, Furthmüller J. Efficiency of *ab-initio* total energy calculations for metals and semiconductors using a plane-wave basis set. *Comput Mat Sci*. 1996;6(1):15–50.
- [31] Kresse G, Furthmüller J. Efficient iterative schemes for *ab initio* total-energy calculations using a plane-wave basis set. *Phys Rev B*. 1996;54(16):11169.
- [32] Blochl PE. Projector augmented-wave method. *Phys Rev B*. 1994;50(24):17953.
- [33] Kresse G, Joubert D. From ultrasoft pseudopotentials to the projector augmented-wave method. *Phys Rev B*. 1999;59(3):1758.
- [34] Perdew JP, Chevary JA, Vosko SH, et al. Atoms, molecules, solids, and surfaces: applications of the generalized gradient approximation for exchange and correlation. *Phys Rev B*. 1992;46(11):6671.
- [35] Perdew JP, Chevary JA, Vosko SH, et al. Erratum: atoms, molecules, solids, and surfaces: applications of the generalized gradient approximation for exchange and correlation. *Phys Rev B*. 1993;48(7):4978.
- [36] Pulay P. Convergence acceleration of iterative sequences. The case of SCF iteration. *Chem Phys Lett*. 1980;73(2):393–398.
- [37] Proffen T, Billinge SJL. PDFFIT, a program for full profile structural refinement of the atomic pair distribution function. *J Appl Cryst*. 1999;32(3):572–575.
- [38] Masson O, Thomas P. Exact and explicit expression of the atomic pair distribution function as obtained from X-ray total scattering experiments. *J Appl Cryst*. 2013;46(2):461–465.