



A fiber-based endomicroscope designed for full Mueller endoscopic polarimetric imaging

Colman Buckley, Jérémy Vizet, Marc Fabert, Jean-Charles Vanel, Damien Kinet, Antonello de Martino, Dominique Pagnoux

► To cite this version:

Colman Buckley, Jérémy Vizet, Marc Fabert, Jean-Charles Vanel, Damien Kinet, et al.. A fiber-based endomicroscope designed for full Mueller endoscopic polarimetric imaging. Workshop Mifobio 2021, Nov 2021, Presqu'île de Giens, France. hal-03420282

HAL Id: hal-03420282

<https://unilim.hal.science/hal-03420282>

Submitted on 9 Nov 2021

HAL is a multi-disciplinary open access archive for the deposit and dissemination of scientific research documents, whether they are published or not. The documents may come from teaching and research institutions in France or abroad, or from public or private research centers.

L'archive ouverte pluridisciplinaire **HAL**, est destinée au dépôt et à la diffusion de documents scientifiques de niveau recherche, publiés ou non, émanant des établissements d'enseignement et de recherche français ou étrangers, des laboratoires publics ou privés.

A fiber-based endomicroscope designed for full Mueller endoscopic polarimetric imaging

Colman Buckley¹, Jérémy Vizet¹, Marc Fabert¹, Jean-Charles Vanel², Damien Kinet³, Antonello de Martino², and Dominique Pagnoux¹

¹Institut de Recherche Xlim, UMR CNRS 7252, Université de Limoges, 87060 Limoges, France

²Université Paris Saclay, LPICM, CNRS, Ecole Polytechnique, 91128 Palaiseau, France

³Université de Mons, Faculté Polytechnique, B-7000 Mons, Belgium



Context and objectives

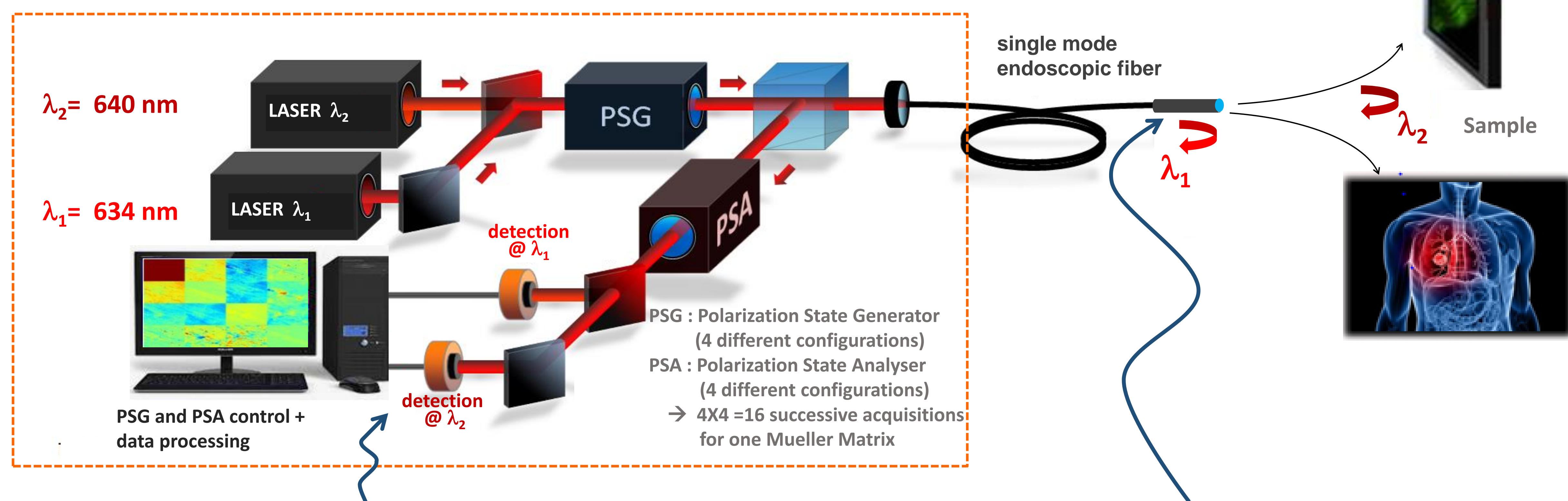
Mueller polarimetry: a powerful technique allowing the determination of all the polarimetric characteristics of a sample from a 4x4 Mueller matrix (M_{samp}).

A promising application...: early diagnosis of diseases affecting biological tissues [1].

... but a serious limitation: since an optical-fiber-based endoscope behaves as an uncontrollable time dependent polarization scrambler, the use of such an instrument seems incompatible with polarimetric imaging: polarimetric imaging is limited to external tissues or biopsies.

The challenge to overcome: how to get rid of the harmful polarimetric effects of the fiber for allowing polarimetric endoscopic imaging of inner tissues?

A novel technique for achieving endoscopic polarimetric Mueller imaging



Two-wavelength differential method (TWDM) based on a simultaneous measurement at two close wavelengths [2]

@ λ_1 → M_{λ_1} = matrix "fiber only" = $M_{\text{Back1}} \cdot M_{\text{Forth1}}$
determination of M_{Back1} and M_{Forth1}

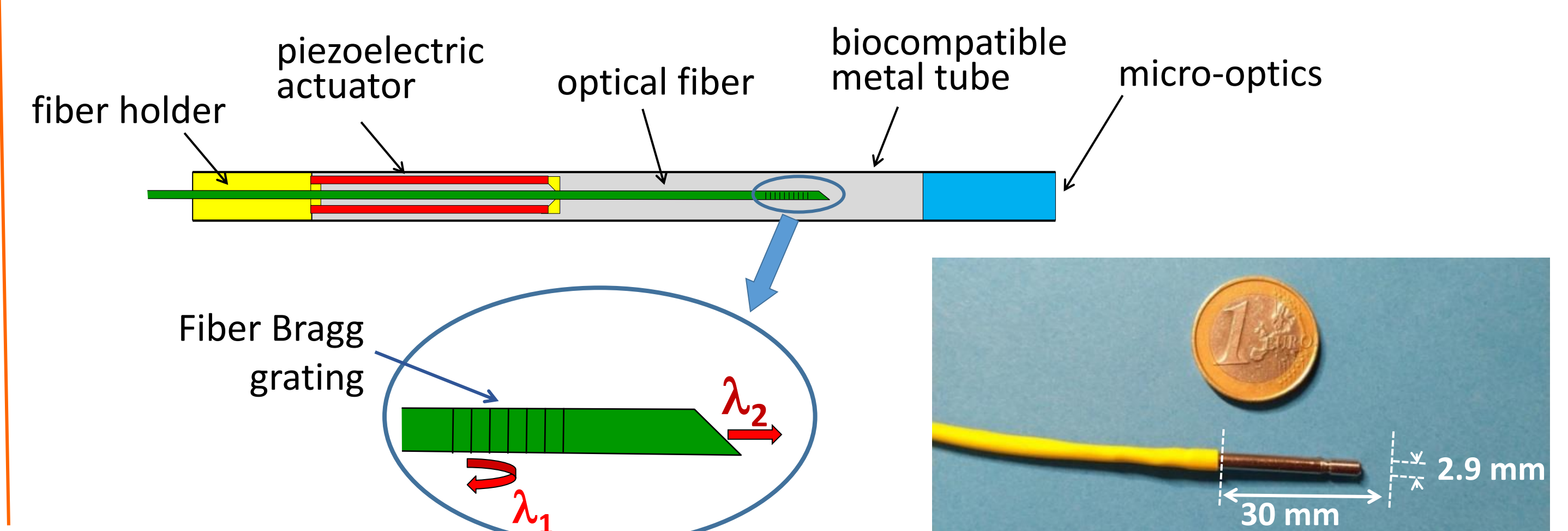
@ λ_2 → M_{λ_2} = matrix "fiber + sample" = $M_{\text{Back2}} \cdot M_{\text{Samp}} \cdot M_{\text{Forth2}}$

If λ_1 and λ_2 are close enough ($\Delta\lambda < 1\%$), thus:

$$M_{\text{Forth1}} \sim M_{\text{Forth2}} \text{ and } M_{\text{Back1}} \sim M_{\text{Back2}}$$

$$\rightarrow M_{\lambda_2} \sim M_{\text{Back1}} \cdot M_{\text{Samp}} \cdot M_{\text{Forth1}} \rightarrow M_{\text{Samp}} \sim M_{\text{Back1}}^{-1} \cdot M_{\lambda_2} \cdot M_{\text{Forth1}}^{-1}$$

Specially designed microprobe making it possible to implement the TWDM [3]

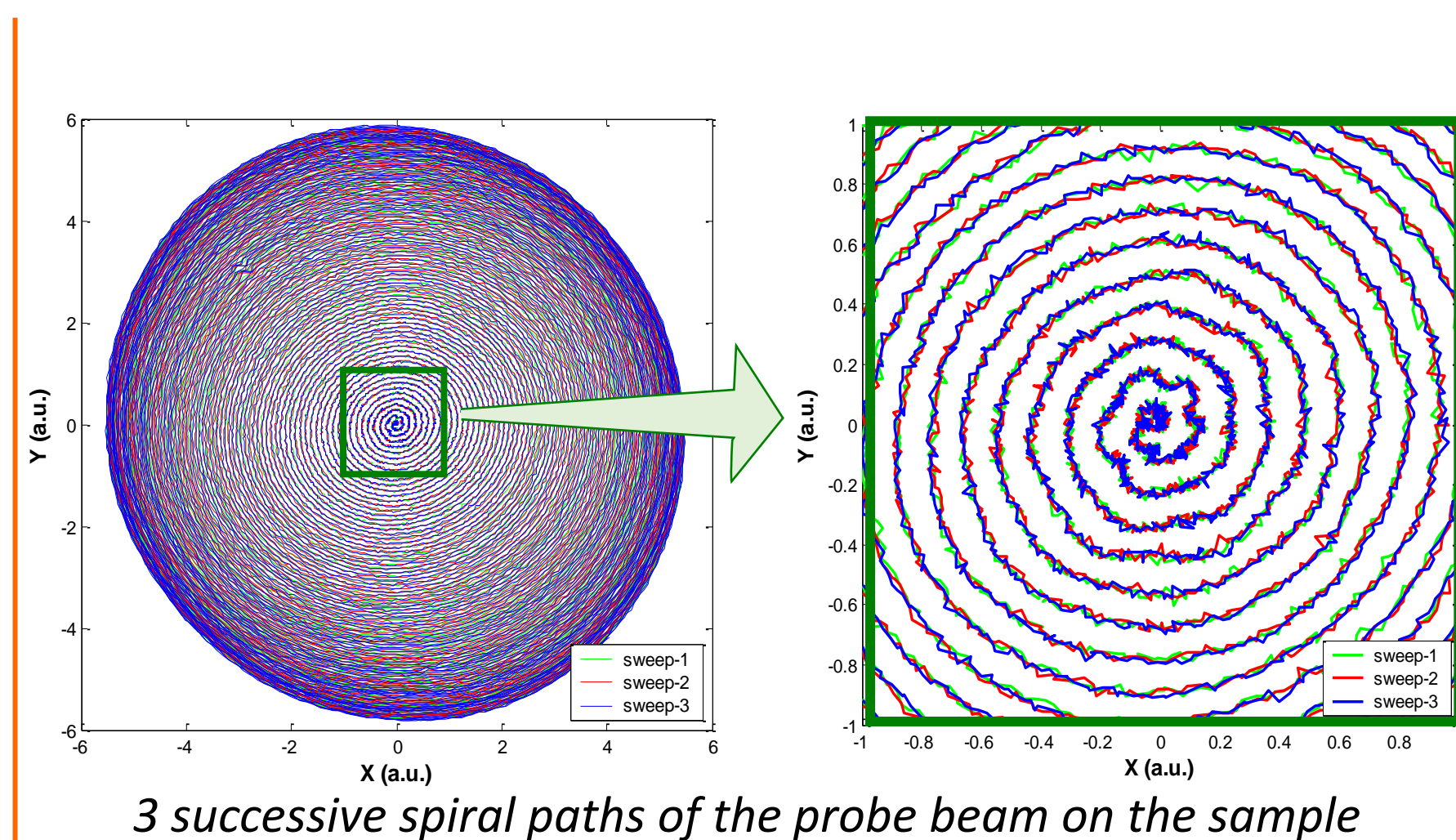


Experimental performances and example of polarimetric endoscopic image

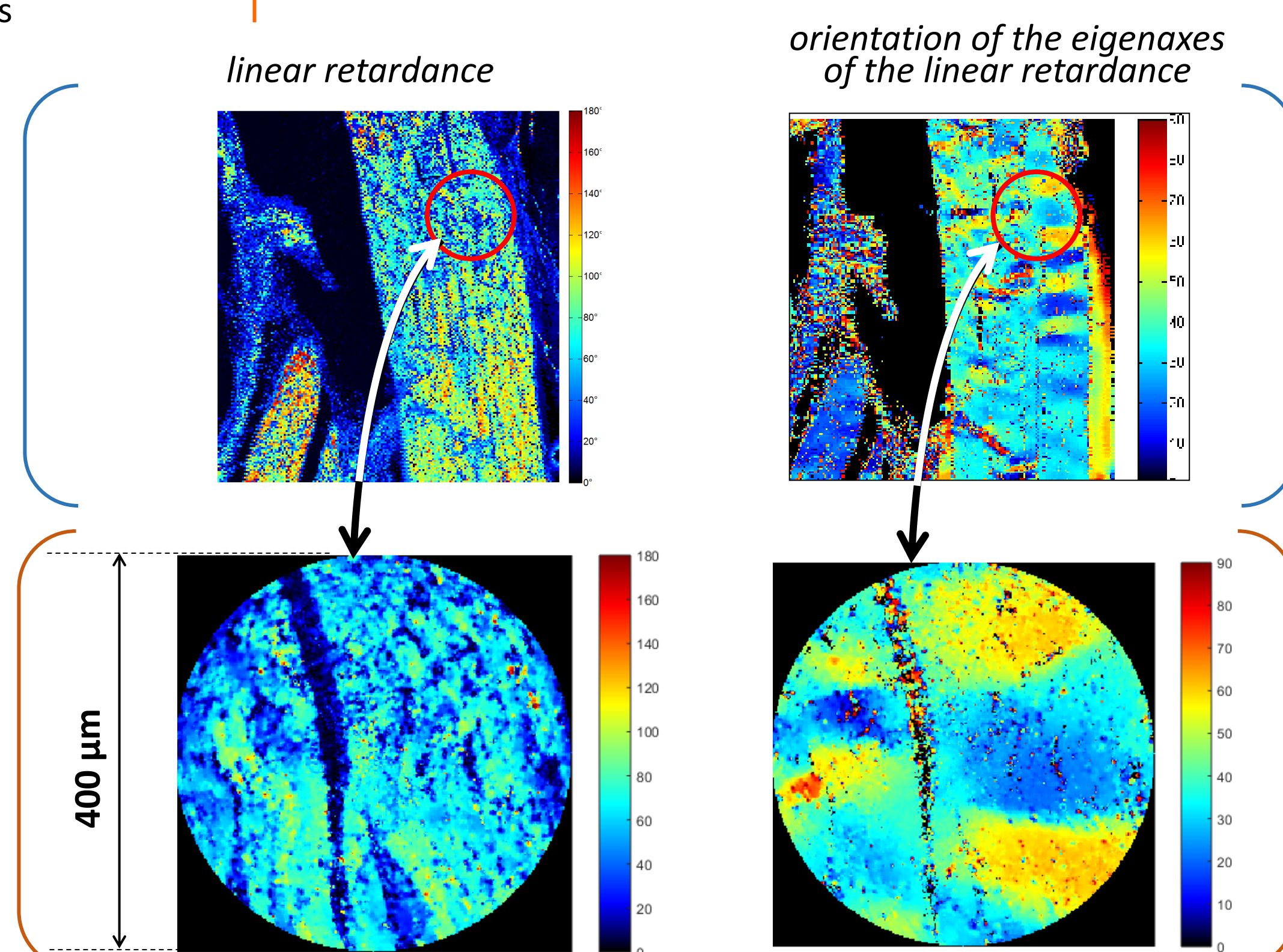
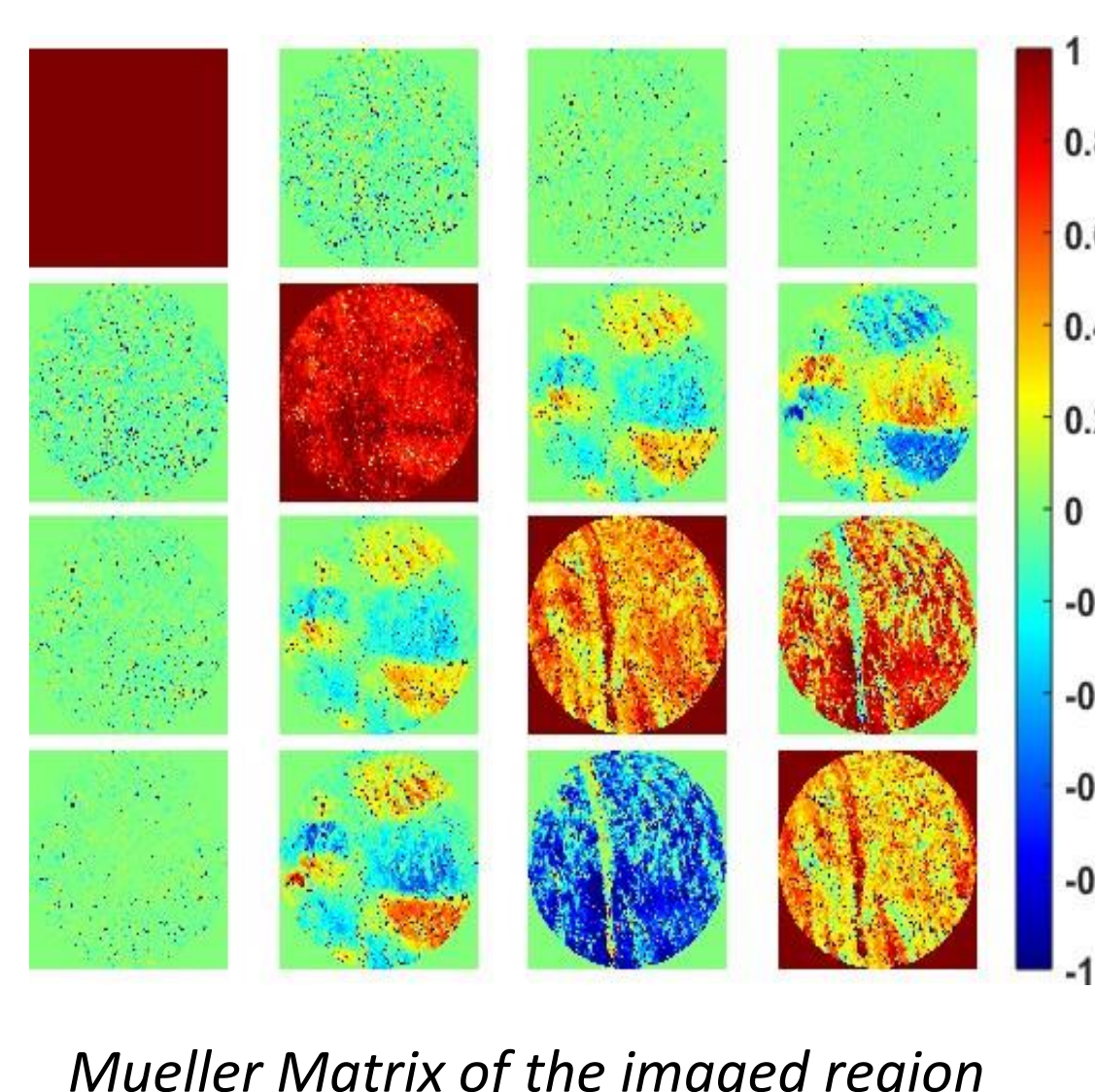
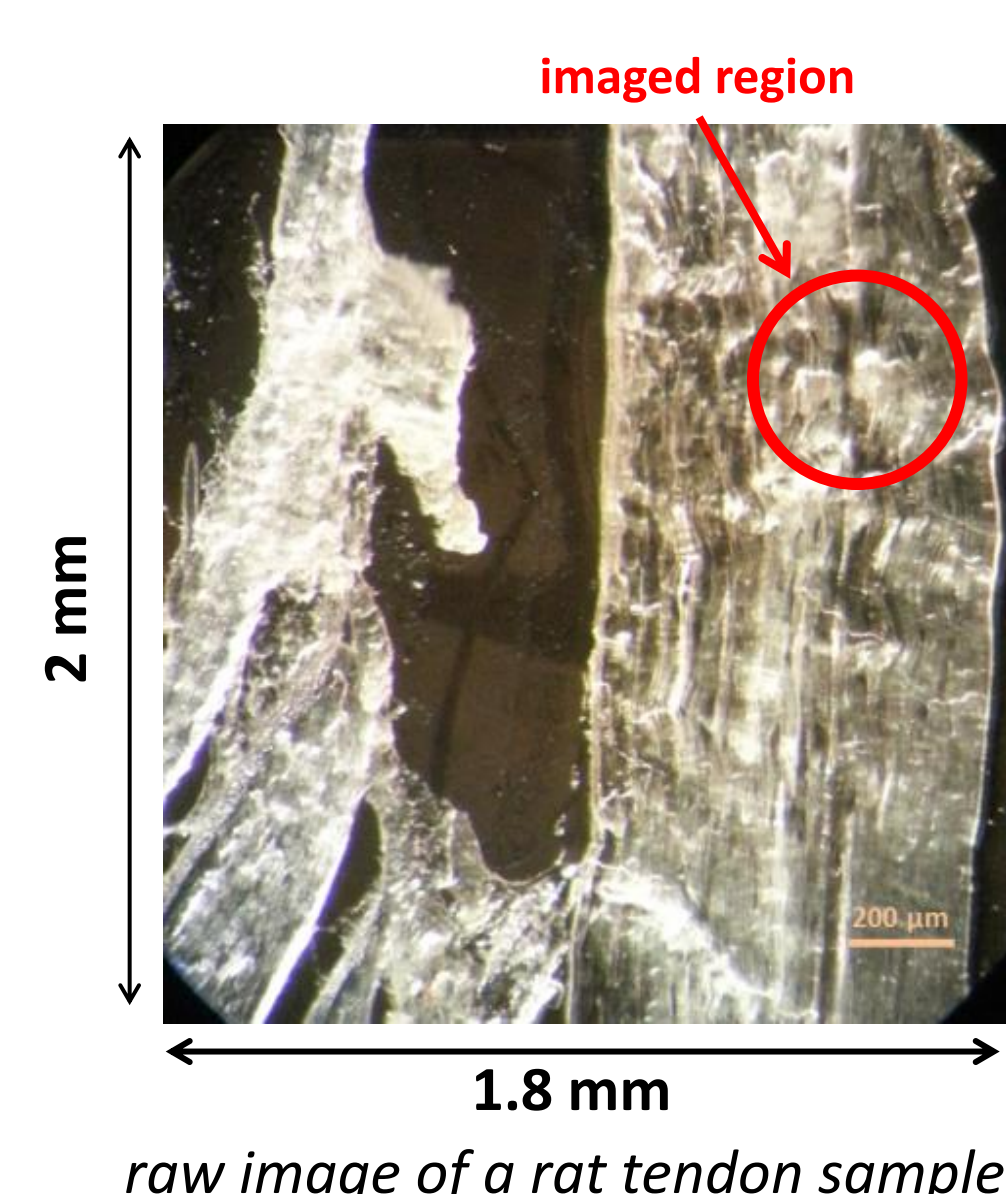
For each pixel of the sample → determination of the associated Mueller matrix M_{samp} by means of the TWDM → Lu-Chipman decomposition of M_{samp} → **remote determination of all the polarimetric characteristics** of this pixel:

- linear retardance (precision of +/- 3°):** effect of birefringence in fibrillar tissues
- depolarization rate (*):** effect of volume scattering of light in the tissue
 - diagnosis of diseases like fibrosis or certain cancers which affect the structure of the tissue at the submicronic scale, inducing changes in retardance and /or depolarization.
- diattenuation (precision < 0.02):** effect of anisotropic absorption or diffusion of light
 - detection of specific biomolecules
- relative direction of the birefringence/diattenuation eigenaxes (precision of +/- 1°)**
 - precise topological characterization of collagen fibers and fibrils

(*) concerning the depolarization measurement, the precision depends on the measuring conditions



- typical circular field of view: 400μm
- reachable field of view: $\Phi = 1\text{mm}$
- resolution: 4μm
- acquisition time for one PSG/PSA configuration (250 X 250 pixels) = 125ms
- dwell time: 1.7μs
- excellent repeatability of the probe beam path (see images on the left)
- one polarization image (requiring 4 X 4 successive acquisitions) achieved every 2s



with a point by point bulk imaging scanner
180 X 200 pixels
production time = 20min [2]

with the microprobe shown above
250 X 250 pixels
production time = 2s [3]

References

- [1] V.V. Tuchin et al., "Optical Polarization in Biomedical Applications", Springer, ISBN 3-540-25876-0 (2006)
- [2] Vizet et al., J. Biomed Optics 21, 7, 071106 (2016).
- [3] Buckley et al., Biomed Opt Express 11, 12, 7032 (2020).

Contacts

dominique.pagnoux@xlim.fr
marc.fabert@xlim.fr



The authors are grateful to the French ANR (grant "IMULE") and to the Cancéropôle Grand Sud Ouest (grant "IMAPOLE") for their financial support to this work