



HAL
open science

Galleria mellonella as a screening tool to study virulence factors of *Aspergillus fumigatus*

Marie-Fleur Durieux, Élise Melloul, Sana Jemel, Lolita Roisin, Marie-Laure Dardé, Jacques Guillot, Éric Dannaoui, Françoise Botterel

► To cite this version:

Marie-Fleur Durieux, Élise Melloul, Sana Jemel, Lolita Roisin, Marie-Laure Dardé, et al.. *Galleria mellonella as a screening tool to study virulence factors of *Aspergillus fumigatus**. *Virulence*, 2021, 12 (1), p. 818-834. 10.1080/21505594.2021.1893945 . hal-03687390

HAL Id: hal-03687390

<https://unilim.hal.science/hal-03687390>

Submitted on 4 Sep 2024

HAL is a multi-disciplinary open access archive for the deposit and dissemination of scientific research documents, whether they are published or not. The documents may come from teaching and research institutions in France or abroad, or from public or private research centers.

L'archive ouverte pluridisciplinaire **HAL**, est destinée au dépôt et à la diffusion de documents scientifiques de niveau recherche, publiés ou non, émanant des établissements d'enseignement et de recherche français ou étrangers, des laboratoires publics ou privés.



Galleria mellonella as a screening tool to study virulence factors of *Aspergillus fumigatus*

Marie-Fleur Durieux, Élise Melloul, Sana Jemel, Lolita Roisin, Marie-Laure Dardé, Jacques Guillot, Éric Dannaoui & Françoise Botterel

To cite this article: Marie-Fleur Durieux, Élise Melloul, Sana Jemel, Lolita Roisin, Marie-Laure Dardé, Jacques Guillot, Éric Dannaoui & Françoise Botterel (2021) *Galleria mellonella* as a screening tool to study virulence factors of *Aspergillus fumigatus*, *Virulence*, 12:1, 818-834, DOI: [10.1080/21505594.2021.1893945](https://doi.org/10.1080/21505594.2021.1893945)

To link to this article: <https://doi.org/10.1080/21505594.2021.1893945>



© 2021 The Author(s). Published by Informa UK Limited, trading as Taylor & Francis Group.



Published online: 08 Mar 2021.



Submit your article to this journal [↗](#)



Article views: 4585



View related articles [↗](#)



View Crossmark data [↗](#)



Citing articles: 19 View citing articles [↗](#)

Galleria mellonella as a screening tool to study virulence factors of *Aspergillus fumigatus*

Marie-Fleur Durieux^{a,b}, Élise Melloul^b, Sana Jemel^b, Lolita Roisin^b, Marie-Laure Dardé^a, Jacques Guillot^{b,c},
Éric Dannaoui^{b,d}, and Françoise Botterel ^{b,e}

^aLaboratoire de Parasitologie - Mycologie, CHU de Limoges, Limoges, France; ^bEA 7380 Dynamic, Université Paris Est Créteil, EnvA, USC ANSES, Créteil, France; ^cÉcole Nationale Vétérinaire d'Alfort, Maisons-Alfort, France; ^dUnité de Parasitologie-mycologie, Service de Microbiologie, Université Paris Descartes, Hôpital Européen Georges Pompidou, AP-HP, Paris, France; ^eUnité de Mycologie, Département de Prévention, Diagnostic Et Traitement Des Infections, Groupe Hospitalier Henri Mondor - Albert Chenevier, APHP, France

ABSTRACT

The invertebrate *Galleria mellonella* has increasingly and widely been used in the last few years to study complex host–microbe interactions. *Aspergillus fumigatus* is one of the most pathogenic fungi causing life-threatening diseases in humans and animals. *Galleria mellonella* larvae have been proven as a reliable model for the analysis of pathogenesis and virulence factors, enable to screen a large number of *A. fumigatus* strains. This review describes the different uses of *G. mellonella* to study *A. fumigatus* and provides a comparison of the different protocols to trace fungal pathogenicity. The review also includes a summary of the diverse mutants tested in *G. mellonella*, and their respective contribution to *A. fumigatus* virulence. Previous investigations indicated that *G. mellonella* should be considered as an interesting tool even though a mammalian model may be required to complete and verify initial data.

ARTICLE HISTORY

Received 11 October 2020
Revised 10 January 2021
Accepted 18 February 2021

KEYWORDS

Review; *Galleria mellonella*;
aspergillus fumigatus; mini-
host model; virulence factors

Introduction

Rodent models are the gold standard in clinical studies and *in vivo* experiments and have been extensively used for a better understanding of the physiopathology of infectious diseases. International fundamental regulation 3Rs rules (Replacement, Reduction, and Refinement) guarantee welfare of animals and encourage researchers to replace traditional rodent models with alternative, non-mammalian models [1]. Since the early 2000s, and particularly over the last few years, many articles on invertebrate and mini-host models have been published in the literature. Until now, the ethical rules have never been applied to the use of insects and nematodes [2]. For instance, fruit fly *Drosophila melanogaster* has been the best-known invertebrate model used in genetic and developmental biology studies for over 100 years [3]. Other invertebrates such as the beetle *Tribolium castaneum*, the nematode *Caenorhabditis elegans*, the butterfly *Bombyx mori*, the moth *Galleria mellonella*, or the non-mammalian vertebrate model *Danio rerio* are also used [3–7]. Their genome, immunity, and physiology were analyzed through many environmental and medical studies. In microbiology, *C. elegans*, *D. melanogaster*, and *G. mellonella* have recently been demonstrated as

interesting tools to evaluate the virulence and the pathogenesis of human pathogens, e.g. fungi. These models were successfully used in virulence assays, immunity tests, histopathology analyses, or new antimicrobial drugs testings [8].

One of these alternative models, *G. mellonella*, has attracted increasing attention in recent years because of the many advantages it provides to study microorganisms. *Galleria mellonella* is become one of the most popular invertebrate models with more than 2,200 scientific articles published (search terms “*Galleria mellonella*” on Pubmed) (Figure 1). The moth *G. mellonella* belongs to the Lepidoptera order and is present worldwide as a ubiquitous pest of honeybees that destroys honeycombs by feeding on bee wax, honey, and bee pollen [9]. In research laboratories, its last larval stage can be used, just before transformation into a pupa. Many recent reviews [10–15] describe very well all the advantages and disadvantages of this mini-host model, and some benefits deserve attention. Larvae are naturally exposed to pathogens and have developed immune defense systems, which have many similarities with the innate immune system of vertebrates. The moth innate immune system, mediated by hemocytes, can fight against a large spectrum of pathogens via phagocytosis,

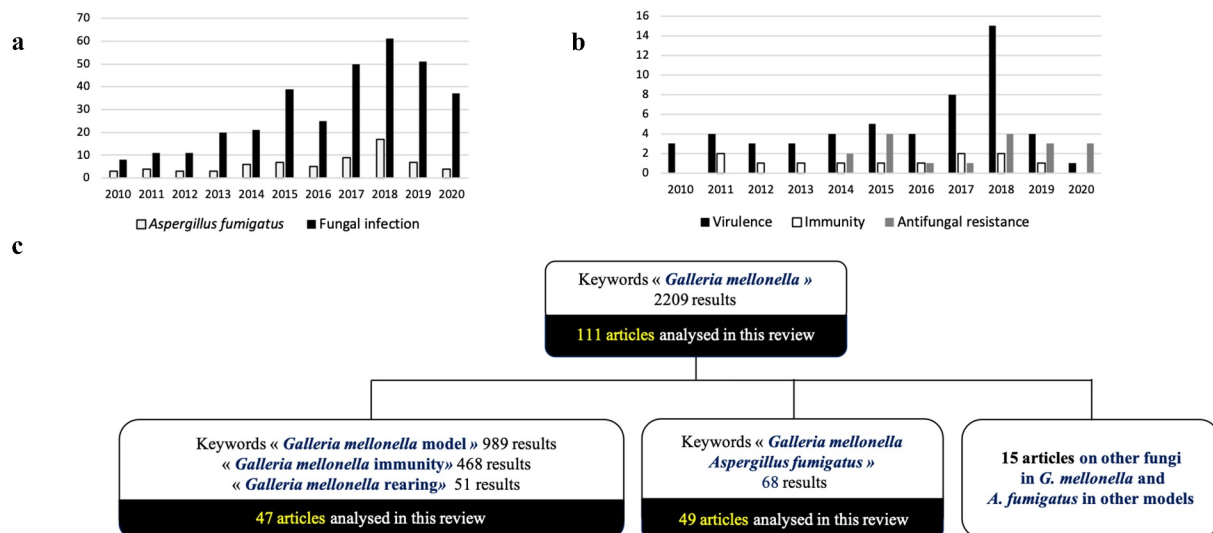


Figure 1. Publications mentioning *A. fumigatus* and *G. mellonella* on Pubmed.

(A) Evolution of the number of publications on *A.fumigatus* and *G.mellonella* over the period 2010 – august 2020; (B) Details of the publication on *A. fumigatus* studies with virulence, resistance to antifungal in *G. mellonella*; (C) number of articles in the literature and in the review on the *G. mellonella* model

melanization, and secretion of antimicrobial peptides [16]. Other intriguing points are its fast and high reproductive rate at low cost and the easy maintenance of its larvae in laboratory without the need for expensive equipment [17,18]. In comparison with other invertebrate models, *G. mellonella* can survive within a wide temperature range (18°C to 37°C) [3,5], an essential point to mimic mammals physiology and facilitate the study of human pathogens. Furthermore, the genome of *G. mellonella* was entirely sequenced in 2018 [19], which makes it easy to have well-defined populations of larvae, and perhaps allows to create a biobank with database as with other invertebrate models, Flybase and WormBase [12]. In our experience and according to Amorim-Vaz *et al.*, Eisenman *et al.*, and more recently Champion *et al.*, the main limitation of this model is the difficulty to have reproducibility of results compared with the mice models [20–22]. The reasons for this are probably the origin of larvae, the different rearing conditions, temperature of storage, nutrition, genetics, and age of larvae used in the experiments [23–26]. This limitation highlights the need for standardization to make *G. mellonella* a more reliable model [22].

Galleria mellonella has been used for the complex study of host–microbe interactions, especially host–fungi interactions [4,6,24–30]. This model is now recognized as a pertinent model to the study of the fungal infections [31,32]. *Aspergillus fumigatus* remains one of the most common pathogenic fungi known to colonize the respiratory tract of patients with chronic

lung diseases (e.g. cystic fibrosis), and to cause invasive fungal infections in immunocompromised patients [–33–35]. The mini-host model *G. mellonella* has been used to evaluate the virulence of *A. fumigatus*, where mutants are tested to investigate the role of specific protein in the pathogenicity, and eventually to try to find a target for novel antifungal therapies.

This review aims to compare the different protocols published in the literature to study *A. fumigatus* in *G. mellonella*, and to present the virulence studies already conducted in this mini-host model. We also present the currently available literature concerning the virulence of *A. fumigatus* in a *G. mellonella* model with several clinical and environmental strains including data obtained in our research team [29]. This study does not tackle the antifungal treatments tested on *A. fumigatus* in the *G. mellonella* model. The latter are included in an additional review of our team and in other recent articles [36,37]

***Galleria mellonella* model**

Galleria mellonella, also known as the wax moth, belongs to the *Pyralidae* family in the Lepidopteran order. Morphology and characteristics of every stage of its lifecycle are precisely described in Kwadha *et al.* and Ellis *et al.* [9,17]. Briefly, the larvae have six legs on the thorax, eight prolegs on the abdominal segment, a digestive tube, vessels, silk glands, and a nervous system (Figure 2). Duration of its life cycle can vary

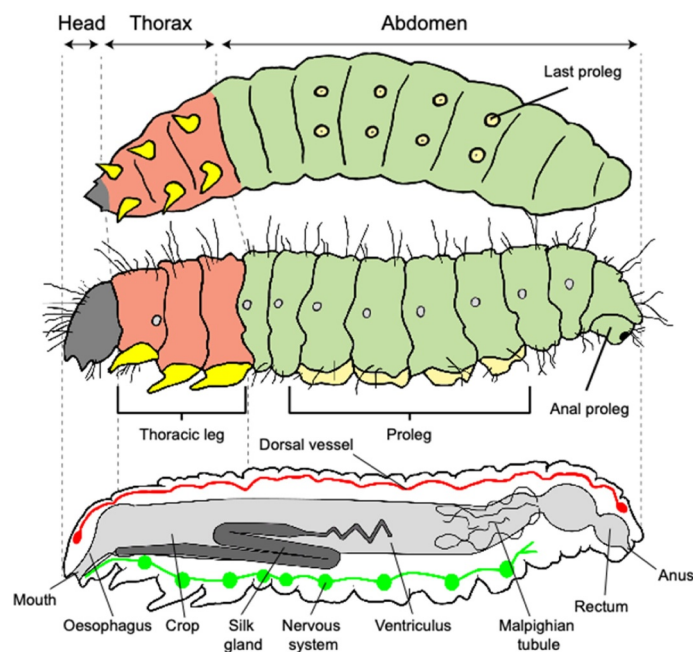


Figure 2. Anatomy of a larva of *Galleria mellonella*, adapted from Singkum *et al.*, 2018 [15] and Engel and Moran, 2013 [40].

from weeks to month depending on several factors, especially food, temperature, and humidity. An artificial food composed of a blend of honey and various cereals [38,39] can be used, but the need for food diminishes with the successive metamorphosis. Thus, food composition could have an impact on pupation, larval stage duration, volume of hemolymph, and density of hemocytes. Larvae can spin a silken thread in all stages, but they surround themselves with a cocoon only during their last stage. Now it is well known that food and environmental condition, such as temperature, humidity and darkness could play a role in the susceptibility to infection. That is why the scientific community endeavors to uniform breeding procedure to limit this source of bias. Jorjao *et al.* and more recently Firacative *et al.* proposed an optimal method to rear *G. mellonella* in laboratories for microbiological studies (dietary components, description of environmental conditions, and a detailed protocol for all life stages of *G. mellonella*) [32,38].

Immune response of *G. mellonella* to *A. fumigatus*

In insects, only the innate immune system is effective and can protect against a large spectrum of pathogens including fungi [41,42]. *G. mellonella* immune system is an open circulating system of which hemolymph is the key element. This innate immune system comprises three parts: (i) physical barrier, (ii) cellular and (iii) humoral immune systems [13]. The cuticle, composed of chitin and many proteins with antimicrobial

properties, represents the first protection line, that acts as a barrier to prevent the entry of pathogens. The cellular component consists of several types of cells, called hemocytes [16,43], circulating in the hemolymph to ensure of phagocytosis [44,45], encapsulation, and clotting activities [13]. At early stages of infection, the increase in circulating hemocyte density is due to release of attached hemocytes from internal organs. Furthermore, the humoral component, released by the hemolymph and body fat, consists of soluble effector molecules including opsonin, e.g. ApoLp-III, a pattern recognition molecule which can bind to β -1,3 glucan of numerous fungus cell wall [46]. Another element of the humoral system is lytic enzymes which harbor several antimicrobial peptides (AMPs).

The process of melanization, a fundamental role of the humoral system in arthropods, is activated upon the penetration of a foreign particle into the larva body [13]. Melanin synthesis, catalyzed by phenoloxidase, limits the spread of microorganisms through the formation of nodules visible on histological sections. Once inside the larva, *A. fumigatus* stimulate hemocytes to increase in density at early stages of infection (2 h). However, the action of several fungal toxins, such as fumagillin and gliotoxin, can counterbalance the physical action of the fungus by inhibiting the action of hemocytes [47,48]. After several hours, *A. fumigatus* can invade larvae with hyphae. This process results in the formation of nodules disseminated all over the body of larva and not only near the site of inoculation (Figure 3). If the infection is

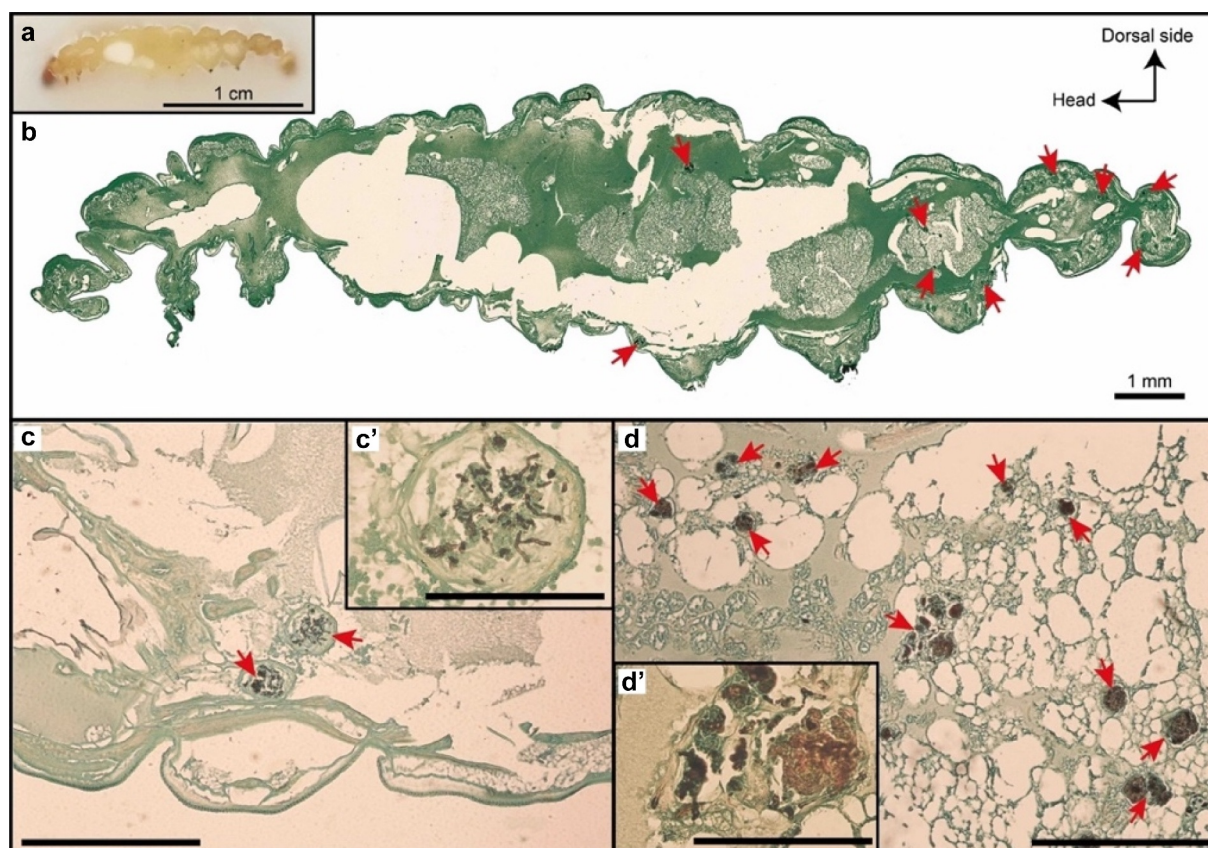


Figure 3. Histological analysis of *A. fumigatus* infection in *Galleria mellonella*.

Sagittal section of *G. mellonella* infected with *A. fumigatus*. (A) Larvae fixed in paraffin; (B) Gomori-Grocott stain; (C) *A. fumigatus* nodules after 3 days of infection (10^5 conidia/larva); (D) *A. fumigatus* nodules after 7 days of infection (10^6 conidia/larva)

controlled by the immune system, the larva can survive. On the contrary, if the immune system cannot control infection, the larvae become completely melanized and die. Many factors can influence the immune response of larvae, such as physical, nutritional, thermal stress, or exposure to cell wall components [44–49]. Recently, Sheehan *et al* described the immune response of *G. mellonella* larvae and the factors influencing it [49].

Experimental design for virulence assay

Infection with filamentous fungi

Homogenous groups of 10 to 20 larvae with cream-color cuticle, of about 200–300 mg weight, 1–3 cm length and spontaneous mobility, are generally used. The larvae should be manipulated delicately to avoid physical stress. After infection, larvae are maintained up to 37°C without feeding. Control groups are also essential to ensure that the trauma of inoculation or the use of buffer do not affect the larvae survival. Three

methods are used to infect the larvae: topical application, ingestion, and injection.

Topical application of fungi causes penetration into the exoskeleton, which is close to natural fungal contamination. Some authors utilized this trauma-free method to inoculate larvae by immersion in a conidial suspension of *Beauveria bassiana* for about 10s [50,51]. In another study, 5 μ L containing *Aspergillus flavus* (1×10^3 to 1×10^8 conidia/mL) was directly applied on the dorsal surface of larvae [52]. Overall, this method is rarely used because of reproducibility issues linked to the difficulty having a precise inoculum delivery into the larvae.

Forced-feeding (ingestion) consists in inserting 10 μ L of fungal suspension into the larval mouthpart using a micro-injector and a needle [53,54,68].

The preferred and the most commonly used method to study interaction between filamentous fungi and *G. mellonella* is the injection of inoculum into larval hemocoel by pricking the cuticle with a needle at the last proleg [26]. The last left proleg is the preferred site for injection but other sites are possible, if necessary [27]. The main upside of this method is the better

delivery of a precise inoculum (5 to 20 μL per larva) using either an insulin or a Hamilton syringe. The latter is more precise to inoculate small volumes. An insulin syringe with an automatic applicator could be used for larger quantities and faster inoculations [26,55,56]. The injection is almost scarless for the larva but there is some risk for the operator (especially for BSL-3 microorganisms) that could be avoided with proper restraint and handling techniques [55,57]. Differences between the employed protocols in terms of inoculum preparation, technique of inoculation, and experimental conditions are described in Table 1.

Follow-up of *A. fumigatus* infection

Mortality monitoring

For the analysis of strains virulence, larvae survival is monitored over time after inoculation, most often every 24 h for 5 days. Larvae movements gradually decreases, reflecting the progression of fungal infection, but to a variable extent depending on fungal species and strains. Determining the best concentration of fungal inoculum is crucial to achieve a substantial killing rate [27]. Inoculum-finding experiments allow to calculate the median and 90% lethal doses (LD50 and LD90), and to compare the survival after wild-type and mutant strains inoculation to assess different virulence factors [56,71].

Morbidity monitoring

Another method can be used to assess the morbidity of larvae, based on several criteria of follow-up. The evaluation of morbidity gives more details on the progression of infection within the larvae. A scoring system that comprises four main criteria, melanization, mobility, capacity to form silk cocoon, and survival, has been used in some studies [14,22,72]. Melanization is an immune process visible to the naked eye and deemed completed when the larva is dead, and the immune response is overtaken. Thus, the degree of melanization is correlated with morbidity and a key element to assess the general condition of the larva. Larval mobility is evaluated individually on spontaneous and stimulated movements. The capacity of larva to turn around and move forward is a strong indicator of good health. The same is said for its capacity to form a silk cocoon. Initially, when the larva is not infected, a whole, highly resistant cocoon forms around it. As the infection spreads, the ability of the larva to form a cocoon decrease. In the pre-mortem phase, the larva can only form a few silk threads. The last criterion is the larval survival as shown in the details of morbidity score and modified by our team (Table 2). Each group obtains

a final score 24 h after injection that seems predictive of the end of the experiment [29].

Histological analyses

To study pathogenesis and the host–pathogen interactions, histological analysis is recommended, especially to describe tissue damage caused by fungal infection. A procedure was developed to analyze *C. albicans* virulence and to assess morphological changes in larva body [73]. This procedure can also be used with other fungal species. It consists in injecting formalin into the larvae which are then stored at 4°C for a few days. Later, larvae are carefully dissected from sagittal or transversal lines and stained with Gomori-Grocott or Hematoxylin and Eosin (HE). Recently, Sheehan *et al.* have provided histological data on invasive *A. fumigatus* infection, and highlighted the usefulness of *G. mellonella* larvae, albeit they have no respiratory system [74]. Indeed, the development of invasive aspergillosis in larvae shows similarities to that occurring in mammals. Sheehan *et al.* showed that the inoculation of conidia is followed by (i) the formation of melanized nodules and (ii) an increase in the density of hemocytes and antimicrobial peptides. These nodules have a histological structure similar to the granulomas detected in the mouse model of aspergillosis. In their work, they utilized a technique that does not require the use of formalin: larvae were embedded in Bioinvision Cryo-Imaging Embedding Compound, and flash-frozen in liquid nitrogen. Then, slides were made with Cryoviz for a specific cryo-imaging.

Infected larvae melanized with time by forming melanized capsules that surrounded the pathogens, and their internal organs were disorganized by the infection. Many authors used the melanization or tissue damage to better understand the progress of infection and the effect of fungal mutants on larvae as visualized by histological analysis and Gomori-Grocott staining [75,76]. In a work of our team, we analyzed the progress of *A. fumigatus* infection in larvae after 3 days (A) and 7 days (B) with appearance of melanized nodules and granulomas containing both conidia and hyphae (Figure 3). Number and size of these granulomas, which are distributed all over the larva, increased over time after infection (personal data).

Galleria mellonella*-based screening to study virulence factors of *Aspergillus fumigatus

Origin of strains

The relationship between virulence and the origin of the strains has insufficiently been studied.

Table 1. Comparison between protocols to analyze virulence of *A. fumigatus* in *G. mellonella*.

Ref.	Larva selection criteria	Larva/group	Inoculation (in hemocoel)	Inoculum conidia/larva	Maintenance of larva		Monitoring (during of experiment)
					Before inoculation	After inoculation	
[85,86,96]	0.3–0.5 g No gray marking	16	10 µL	5x10 ⁵	/	In Petri dishes, in the dark, at 37°C	Every 12 h (8 days)
[95]	/	20	5 µL	5x10 ⁶	/	At 37°C	Daily (5 days)
[88,91,94]	6th -instar larvae	15	5 µL	2x10 ⁵	/	At 37°C	Daily (5 days)
[43]	6 th -instar larvae	20	20 µL Myjector U-100 Insulin needle	1x10 ⁴	In wood shavings, in the dark, at 15°C	In Petri dishes, in the dark, at 30°C	Daily (5 days)
[29,58]	0.2–0.4 g	10	10 µL Hamilton syringe	□ 3 × 10 ⁶ to 3 × 10 ³	/	At 37°C	Daily (7 days)
[108]	/	30	20 µL	1x10 ⁶ or 1 × 10 ⁷	/	/	Daily (7 days)
[59,60,112]	6 th -instar larvae	20	20 µL	1x10 ⁷	In the dark, at 18°C	In the dark, at 30°C	Daily (6 days)
[110]	0.3–0.4 g 0.275 and 0.300 g No gray marking	30	Hamilton syringe	1x10 ⁶	/	In Petri dish, in the dark, at 37°C	After 16 h, every 2 h (30 h)
[61]	6 th -instar larvae	/	20 µL	1x10 ⁷	In the dark, at 18°C	In the dark, at 30°C	Daily (6 days)
[106]	6 th -instar larvae	/	Myjector U-100 insulin syringe	1x10 ⁴ to 1 × 10 ⁷	In the dark, at 15°C	At 30°C	/
[97]	0.2–0.4 g 6 th -instar larvae	12	5 µL Hamilton syringe	5x10 ⁵	/	In Petri dishes, in the dark, at 37°C	Daily, (5 days)
[62]	0.25–0.35 g	30	5 µL	5x10 ⁷	/	/	Every 12 h (5 days)
[109]	No gray marking	10 to 15	20 µL Disposable 29.5-gauge hypodermic needle	5x10 ⁵ 2x10 ⁵	/	/	Daily (7 days)
[63]	0.2 g Final-instar larvae	10	10 µL Hamilton syringe	1x10 ⁵	In wood shavings, in the dark	In Petri dishes, in the dark, at 37°C	Daily (5 days)
[64]	0.2 g Final-instar larvae	10	5 µL	1x10 ⁶	Without food, at 37°C, in the dark for 24 h	In Petri dishes, in the dark, at 37°C	Daily (10 days)
[76]	0.275–0.300 g Sixth instar larvae	/	/	1x10 ⁵	/	In the dark, at 37°C	Daily (10 days)
[77]	6 th -instar larvae	/	5 µL	1x10 ⁵	/	In the dark, at 37°C	Daily (10 days)
[65]	0.3 g 6 th -instar larvae	30 to 35	5 µL Hamilton syringe	5x10 ⁶	In wood shavings, in the dark, at room temperature	In Petri dishes, in a dark humidified incubator at 37°C	Daily (8 days)
[89]	0.30–0.35 g	16	10 µL	5x10 ⁵	/	In the dark, at 37°C	Every 12 h (5 days)
[66]	/	30	20 µL	5x10 ⁶	/	/	Daily (3 days)
[97]	0.275–0.300 g	30	10 µL	1x 10 ⁵ or 1x10 ⁶	/	In Petri dishes, in the dark, at 37°C	After 16 h, every 2 h (7 days)
[107]	6 th -instar larvae	20 or 30	20 µL	1x10 ⁶ or 1x10 ⁷	In wood shavings, in the dark, at 15°C	/	Daily (4 days)
[67]	0.2–0.4 g	12–28	20 µL	8x10 ⁴	/	At 37°C	Daily (7 days)
[98]	0.3–0.5 g	10	10 µL	5x10 ⁵	At 8°C	In the dark, at 37°C	Every 8 h (6 days)
[90]	0.275–0.300 g	10	5 µL	1x10 ⁶ (37°C) 5x10 ⁶ (30°C)	/	At 37°C or 30°C	Every 12 h (6 days)
[81]	/	30	10 µL Hamilton 1 mL gas-tight syringe	1x10 ⁸ to 1x10 ³	In wood shavings, in the dark, at 4°C for up to 10 days	In Petri dishes, in the dark, at 37°C	Daily (7 days)
[83]	0.25–0.30 g	10	5 µL Hamilton syringe	500 CFU/ µL	/	In Petri dishes, in the dark, at 37°C, with pine wood chips	Daily (8 days)
[69]	6 th instar larvae 15–25 mm length	30	10 µL Braun Omnican 50-U 100 0.5 mL insulin syringe	1x10 ⁶	/	In the dark, at 37°C	Daily (7 days)

Table 2. Examples of scores for monitoring pathogenicity in *Galleria mellonella*.

Category Activity	Loh <i>et al.</i> , health index scoring system [73]		Melloul <i>et al.</i> , 2018 [29]	
	Description	Score	Description	Score
	No movement	0	No movement	0
	Minimal movement	1	No turn around and minimal movement	1
	on stimulation	2	on stimulation	2
		3	Difficult turn around and weak spontaneous mobility	3
	Move when stimulated		Normal, able to turn around and move	
	Move without stimulation			
Cocoon formation	No cocoon	0	No cocoon	0
	Partial cocoon	0.5	Full cocoon	1
	Full cocoon	1		
Melanization	Black larvae	0	Melanized larvae	0
	Black spots on brown larvae	1	No melanized larva	1
		2		
		3		
	≥3 spots on beige larvae	4		
	<3 spots on beige larvae			
Survival	No melanization			
	Dead	0	Dead	0
	Alive	2	Alive	1

In rodents models, studies showed that *A. fumigatus* environmental isolates were less virulent than clinical isolates [77–79]. Similarly, Alshareef *et al.* observed that clinical strains (n = 10) appeared to be more virulent than the environmental ones (n = 20) in a *G. mellonella* model [80]. However, high variability was also observed between isolates of the same origin [80], even between isogenic strains isolated from a single chronic granulomatous disease patient [81].

Other studies showed opposite results; Cheema and Christians [82] observed a lower survival rate of *G. mellonella* larvae inoculated with environmental strains (n = 8) compared with clinical isolates (n = 8). In the same way, Knox *et al.* showed that two *A. fumigatus* isolates collected in the International Space Station were more lethal than the clinical reference strain in zebrafish model [83].

These discordant results preclude any conclusion of isolate origin effect on virulence of *A. fumigatus* in *G. mellonella* model. Moreover, a recent study [84] has analyzed the whole-genome sequence of *A. fumigatus* isolates to determine their virulence genes content and revealed a high genetic diversity between environmental and clinical isolates, as well as between clinical isolates from the same patient, but a similar virulence genes content.

Up to now, no animal-origin strains have been tested in *G. mellonella* model. In our team, we have tested for the first-time the pathogenicity of two different animal *A. fumigatus* strains collected from wild fauna (AF_A1) and from a duck (AF_A2) [29]. Ten larvae were infected by injecting the hemocoel with 10 µL at the concentration of 10⁶ conidia/larva. After 7 days of infection, AF_A1 had a 10% survival rate compared with 30% survival rate for AF_A2. The variability of virulence observed for the animal strains is similarly for the clinical and the environmental strains. These results are consistent with those of other studies. However, currently, no link could be established between the origin and the pathogenicity of *A. fumigatus* strains [80,82,84].

The relationship between virulence and fungal development (conidiation, germination, and fungal growth) involves several mechanisms not completely elucidated. Understanding these mechanisms is essential mainly to find new therapeutic targets against *A. fumigatus*. A large number of *A. fumigatus* mutants involved in these signaling pathways have been tested in *G. mellonella* model with sometimes discordant results, especially compared to mice models [85–98] (Table 3).

Conidiation and germination

In fungi, six regulators of G protein signaling (RGS) domain proteins (flbA, gprK, rgsA, rax1, rgsC, and rgsD) are involved in fungal growth, sporulation, stress response, secondary metabolites, and virulence. Some of them negatively or positively regulate asexual development, gliotoxin or melanin production, and virulence of *A. fumigatus* in *G. mellonella* (Table 3). Thus, the Δ rgsD mutant displayed increased conidiation and elevated virulence [101], while the Δ rgsC [75] and Δ gprK [76] mutants showed reduced conidiation and increased germination, and decreased virulence in the larvae.

Other proteins are involved in cytoskeletal dynamics of *A. fumigatus*, as myosin (actin-based motor proteins family) that seems to have an important role in regulating virulence of *A. fumigatus* (Table 3). The Δ myoE and Δ myoB mutant strains had distinct effect on fungal development (delayed germination and reduced or increased conidiation, respectively) but were both hypovirulent in *G. mellonella* larvae [85].

Fungal growth

The calcium-calcineurin signaling pathway has an important role in fungal physiological processes, stress responses, and virulence [70, 86,87]

Table 3. List of *A. fumigatus* mutants tested in *Galleria mellonella*.

Function	Mutants	Reference <i>A. fumigatus</i> strain	<i>In vitro</i> effects on development, stress response, and metabolism	Virulence in <i>G. mellonella</i>	Virulence in mice	Ref.
SECONDARY METABOLITES						
mtfA gene encodes a putative C2H2 zinc finger domain-type transcription factor (fungal development and secondary metabolism)	ΔmtfA OEmtfA		Role in growth rate & gliotoxin production	Hypovirulent / Normal /	/	[110]
rtfA gene encodes a RNA polymerase II transcription elongation factor-like protein	ΔrtfA rtfA OE	Af CEA10 Af CEA17	Role in growth rate & conidiation, stress response, gliotoxin production Reduce growth rate, increase conidiation, oxidative stress, and metabolites metabolism No difference in growth, conidiation, stress response, or metabolites metabolism. Minor effect on cell wall.	Hypovirulent / Normal /	Normal (40)	[97]
Gene cluster Alb1 : encodes polyketide synthase involved in melanin pathway Aygl1 : encodes heptaketide hydrolyase	Color mutant alb1 Color mutant aygl1	Af 293		Hypervirulent / Hypervirulent /	Hypovirulent /	[100]
Aip2 : encodes hydroxynaphthalene reductases Aip1 : encodes scytalone dehydratases Abr1 : encodes multicopper oxidase Abr2 : encodes laccase dimaW , easM , A , G genes involved in ergot alkaloid pathway	Color mutant arp2 Color mutant arp1 Color mutant abr1 Color mutant abr2 ΔdimaW ΔeasM ΔeasA/G	Af FGSC A1141 Af293		Hypervirulent / Hypervirulent / Hypervirulent / Hypovirulent / Hypovirulent / Hypovirulent / Hypovirulent /	/	[109]
Pes1 , PesL : nonribosomal peptide (NRP) synthetases involved in fumigaclavine C biosynthesis	ΔpesL Δpes1 Δpes1	ΔakuB mutant background in ΔakuB mutant and ATCC 46,645 backgrounds Af293.1	Reduce tolerance to H ₂ O ₂ but increase tolerance to menadione, essential for fumigaclavine C biosynthesis Alter conidial morphology & hydrophobicity. More susceptible to oxidative stress	Hypovirulent / Hypovirulent / Hypovirulent /	/	[107] [108]
DEVELOPMENT						
Rgs (RgsC , RgsD & GprK): regulator of G protein signaling, crucial roles in upstream regulation of vegetative growth, development, secondary metabolism, and virulence	ΔrgsD ΔrgsC	Af293 Af293.6	Increase conidiation, stress response, gliotoxin and melanin production Increase germination, reduce conidiation, growth, tolerance to H ₂ O ₂ and gliotoxin production, modify cell wall	Hypervirulent / Hypovirulent /	/	[87] [76]
NosA : number of sexual spores, transcription factor	ΔgprK ΔnosA	Af293.1 Af CEA17 ΔakuB	Increase germination & reduce conidiation, tolerance to H ₂ O ₂ and gliotoxin production Slightly reduce conidiation and increase radial growth & germination	Normal / Hypervirulent	/	[77] (115)
Cofilin : actin depolymerizing factor, role in actin cytoskeleton dynamic	cofilin_{55E}/cofilin Cofilin OE D19A R21A K36A	Af CEA17 Δku80 Af CEA17 Δku80	Impair growth rate, regulate cell wall & modify resistance to H ₂ O ₂ Role in growth rate & cell wall, increase resistance to H ₂ O ₂ Increase production of ROS, apoptosis and ergosterol levels Increase production of ROS, apoptosis and ergosterol levels	Hypovirulent / Hypovirulent / Hypovirulent / Hypervirulent /	Normal Normal Normal	[86] [85] [89]
Myosin : cytoskeleton component, member of actin-based motor proteins family	ΔmyoB (class II) ΔmyoE (class V) ΔmyoBΔmyoE	Af akuBKU80 pyrG ⁻ ΔmyoB	Delayed germination, increase of conidiation & modification of cell wall Delayed germination, reduction of growth rate & conidiation, modification of cell wall	Hypovirulent / Hypovirulent / Hypovirulent /	Hypovirulent Normal Normal	[95]

(Continued)

Table 3. (Continued).

Function	Mutants	Reference <i>A. fumigatus</i> strain	<i>In vitro</i> effects on development, stress response, and metabolism	Virulence in <i>G. mellonella</i>	Virulence in mice	Ref.
Septins: GTPases family, regulates cellular processes (cell wall integrity, septation)	$\Delta aspA$ $\Delta aspB$ $\Delta aspC$ $\Delta aspD$ $\Delta aspE$ $\Delta aspEAaspD$ $\Delta aspEAaspB$ $\Delta aspEAaspDAaspB$	Af <i>akuB</i> ^{KU80}	No difference in growth rate, reduce conidiation Reduce growth rate, reduce conidiation No difference in growth rate, reduce conidiation	Hypervirulent / Hypervirulent / Normal / Normal / Normal / Hypervirulent / Hypervirulent / Normal /	Normal Normal Normal	[94]
Rho1: small GTPase, a potential regulatory subunit of β -1,3-glucan synthase	$Rho1_{reton}$ $Rho1 OE$ $\Delta kin1$	Af CEA17 $\Delta ku80$ Af <i>akuB</i> ^{KU80}	No growth & increase H ₂ O ₂ No difference in growth rate or in stress response No difference in growth rate, conidiation & cell wall. Role in stress response	Avirulent / Normal / Normal /	Normal Normal	[96]
Kin1: protein kinase is a member of the eukaryotic PAR-1/MARK/MELK family	$\Delta srgA A$ $\Delta srgA B$ $\Delta srgA C$	Af528	Reduce growth rate & aberrant conidiation, role in stress response	Normal / Normal / Hypovirulent /	Normal / Normal / Hypovirulent /	[97]
srgA: (secretion related GTPase A) encoding a Rab GTPase of the Rab family, master regulators of membrane trafficking	<i>mmm1</i>_{reton}	Af535	Reduce growth rate	Hypovirulent /	/	[98]
ERMES: Endoplasmic-Reticulum mitochondria encounter structure, tether between mitochondria and endoplasmic reticulum	<i>SwoH</i>^{Y85F}	Af CEA17-80	Reduce growth rate and increased sensitivity to elevated temperatures	Hypovirulent /	/	[85]
CalcineurineswoH: nucleoside iphosphate kinase, interaction with the catalytic subunit of calcineurin (CaIa)	<i>cnaA</i> : calcineurin A (<i>cnaA</i>) catalytic subunit	Af293.1	Reduce germination, growth rate & conidiation	Hypovirulent	Hypovirulence	[88]
METABOLISM						
mirC: Siderophore iron transporter involved in synthesis of siderophores in intracellular microsomal compartment	$\Delta mirC$ (Iron-deplete condition)	Af ATCC 46,645	Reduce growth rate and conidiation	Normal	/	[66]
Sid: siderophore	$\Delta sidA$ $\Delta sidC$ $\Delta sidF$ $\Delta sidD$	Af ATCC 46,645 Af ATCC 46,645 Af ATCC 46,645 Af ATCC 46,645	/	Avirulent Hypovirulent Avirulent Avirulent	Avirulent Hypovirulent Hypovirulent Hypovirulent	[58]
Paba: gene encodes para aminobenzoic acid synthetase PABA, in folate biosynthesis pathway	<i>cpa</i> <i>paba</i>	Af D141 Af 237	Reduce growth rate & iron metabolism	Avirulent Avirulent Hypovirulent	Avirulent Avirulent Avirulent	[112]
ArgEF: encodes for 3 enzymes acetylglutamate synthase & kinase, acetylglutamyI-phosphate reductase	$\Delta argEF$ $\Delta argB$	\DeltaakuB derived from Af CEA17 Af293	Reduce growth rate & iron metabolism No difference in growth & iron metabolism	Hypovirulent / Normal /	/	[112]
ArgB: encodes for ornithine transcarbamoyl transferase	$\Delta argJ$	Af577 (ATCC46,645)	/	Hypovirulent	Hypovirulent	[113]
ArgJ: the only arginine biosynthetic enzyme lacking mammalian homologs	$\Delta amcA$ (Iron-deplete condition + Nitrogen source)	Af 577 (ATCC 46645 ΔkuA)	Reduce conidiation, growth rate & iron metabolism in presence of Glutamate or Ornithine No difference in fungal development & slight reduction of iron metabolism in presence of Arginine or Arginine + Ornithine	Normal /	/	[60]
AmcA: mitochondrial transporter	$\Delta acuM$ (Iron deficiency condition)	Af293	Reduced growth rate and iron metabolism	Hypovirulent	Hypovirulent	[65]

(Continued)

Table 3. (Continued).

Function	Mutants	Reference <i>A. fumigatus</i> strain	<i>In vitro</i> effects on development, stress response, and metabolism	Virulence in <i>G. mellonella</i>	Virulence in mice	Ref.
LeuB : transcription factor	ΔleuB (Normal or iron deficiency condition)	Af A1160 Δ Ku80 pyrG	Reduce growth rate in normal condition Increase or reduce growth rate in iron deficiency condition	Hypovirulent	/	[59]
PptA : a phosphopantetheinyl transferase (P-pant)	ΔpptA	Af A1160 Δ Ku80 pyrG ⁺	No production of secondary metabolites	Avirulent	Avirulent	[69]
PccaA : PIB-type cation ATPase which links metal homeostasis and heavy metal tolerance	ΔpccaA	Af293	Reduce growth rate in presence of cadmium sulfate No difference in growth rate in presence of copper, iron, silver & zinc sulfate	Hypovirulent	/	[67]
	OE<pccaa< b=""></pccaa<>	Af293	Increase growth rate in presence of cadmium sulfate	Normal	/	
Siroheme : heme-like group used for sulfate and nitrate assimilation; met8 : gene encoding the bifunctional dehydrogenase/ferrochelatase enzyme Met8	Δmet8	Af577	No difference in growth rate in presence of copper, iron, silver & zinc sulfate Role in growth rate & stress response	Hypovirulent	/	[61]

The analysis of the effect of virulence factors is based on the comparison of virulence of a wild strain with that of mutants obtained by gene deletion.

Increased: increased pathogenicity relative to wild strain; Decreased: decreased pathogenicity relative to wild strain;

No change: no change in the pathogenicity relative to wild strain; Avirulent: no pathogenicity with the mutant

The Rab (Ras-related in brain) family of small GTPases (srgA A, srgA B, srgA C) were evaluated in *G. mellonella* model and showed their involvement in fungal development and filamentation. Only the Δ srgA C strain showed lower fungal virulence in *G. mellonella* larvae [89].

Septation

Septins, a conserved family of GTPases, are involved in a variety of critical cellular functions, including cell wall integrity and septation in *A. nidulans* [90,91]. On the other hand, *A. fumigatus* has five septins (aspA, aspB, aspC, aspD, and aspE) that seem necessary for septation but not for fungal growth [92] (Table 3). The Δ aspA, Δ aspB, and Δ aspC mutant strains were hyper-virulent in *G. mellonella*. The virulence of Δ aspB strain was similar to that of the wild type strain in murine model [92].

Secondary metabolites

A. fumigatus produces a wide range of secondary metabolites that can be harmful or beneficial. These small molecules of low molecular weight often have complex biosynthesis. Thus, Non-Ribosomal Peptide Synthetases

(NRPS), key-enzymes involved in the biosynthesis of secondary metabolites in fungi [93], have many metabolic functions not yet elucidated. These secondary metabolites are necessary components since they enable the fungus to adapt itself to the host and grow inside it by escaping the immune response mechanisms. Other functions of these secondary metabolites are to facilitate tissue colonization and help the fungus tolerate external aggressions such as UV, desiccation, or competition with other micro-organisms [94]. Sequencing of the *A. fumigatus* genome showed the presence of 14 genes encoding for NRPS. *G. mellonella* model allowed researchers to study some NRPS functions, including gliotoxin production, as well as other molecules involved in acquisition of nutrients essential for fungal survival, such as iron (siderophores) (Table 3).

Secondary metabolites interacting with the immune response

Gliotoxin is best known secondary metabolites of *A. fumigatus*. It is a virulence factor which inhibits macrophage phagocytosis and oxidative response to stress, decreases cytotoxic activity of T cells, and hinders induction of apoptosis of host cells [95]. Of note, *G. mellonella* larvae mortality with the Δ mtfA strain is

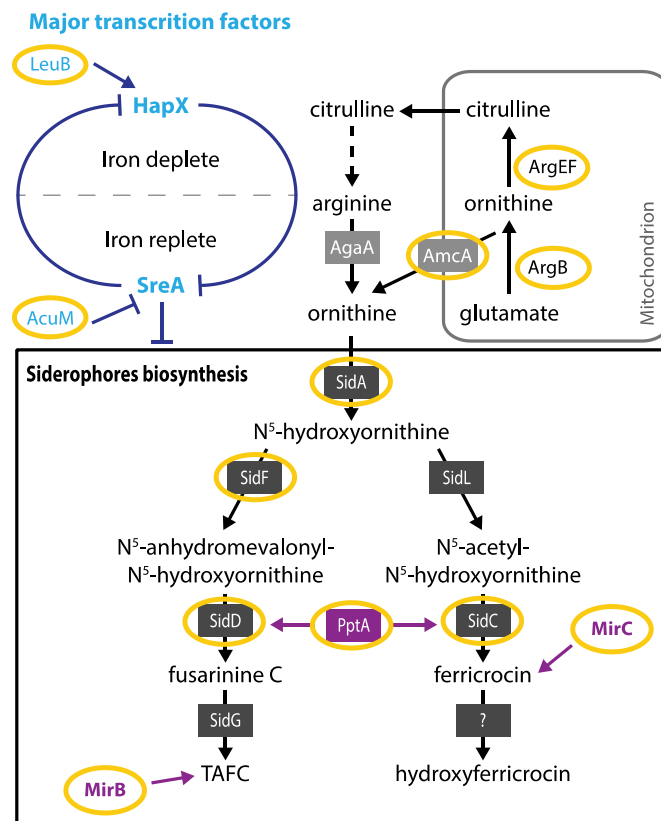


Figure 4. Iron metabolism of *A. fumigatus* studied in *G. mellonella* (adapted from [109]).

Yellow circles: steps of iron metabolism of *A. fumigatus* studied in *G. mellonella*

reduced [96] (Table 3). The *mtfA* transcription factor acts to regulate gliotoxin biosynthesis (via *gliZ* and *gliP* genes), in addition to its involvement in fungal growth and conidiation. On the same line, Reeves *et al.* showed a positive correlation between gliotoxin production and pathogenicity of selected *A. fumigatus* strains [48] originally differed in gliotoxin production. High rate of gliotoxin production by ATCC26933 strain was associated with high mortality in larvae, whereas ATCC16424, ATCC13073, and ATCC14109, the lower production of gliotoxin and caused less mortality in larvae (Table 3).

Melanin is another secondary metabolite and virulence factor of *A. fumigatus*. Melanin is a polymer of dihydroxynaphthalene (DHN) present on the surface of conidia to provide protection against UV and desiccation, in addition to its capacity to neutralize free radicals. Melanin-deficient mutants caused an increase of virulence in *G. mellonella* [97] (Table 3). Perhaps the absence of melanin could lead to a modification of the fungal cell wall which in turn triggered a greater immune response in the larvae.

Fumagillin, among the other mycotoxins of *A. fumigatus* analyzed in *G. mellonella* as a virulence factor, inhibits the action of neutrophils, a central element of the immune response to microbial infections. Fumagillin is produced during the development of *A. fumigatus* hyphae. A study reported that fumagillin inhibited the phagocytosis function of hemocytes, thus facilitating the growth of the fungus in the larva [47]. Therefore, pre-administration of fumagillin to larvae would increase susceptibility to *A. fumigatus* infection [98,99] (Table 3).

The ergot alkaloids are other metabolites produced by *A. fumigatus* (Table 3). The role of these alkaloids in the pathogenicity of *A. fumigatus* has been well studied *in vivo* in *G. mellonella*. *A. fumigatus* strains with ergot alkaloids mutations (fumigaclavine C deficiency) showed a virulence decrease. Fumigaclavine C is an inhibitor of TNF- α in human macrophages and could decrease expression of inflammatory cytokines in mice. *PesL* and *pes1*, involved in the final step of fumigaclavine C biosynthesis, have a role in the pathogenicity of *A. fumigatus* since $\Delta pesL$ was hypovirulent in *G. mellonella* [102]. O'Hanlon *et al.* [102] found no difference in mortality compared with the reference strain ATCC46645, whereas Reeves *et al.* [103] observed a decrease in virulence upon using the wild-type strain Af293.1. Another gene, *dmaW*, implicated in the biosynthesis of fumigaclavine C, also had an effect on virulence of *A. fumigatus* in *G. mellonella* [104]. The mutant $\Delta dmaW$ inhibited the synthesis of final product fumigaclavine C, and

consequently lowered the virulence of *A. fumigatus* in *G. mellonella*.

Secondary metabolites of *A. fumigatus* involved in iron metabolism

Two types of siderophores are described in *A. fumigatus*: extracellular hypha-secreted siderophores [fusarinin C (FSC) and triacetylfusarinin C (TAFC)], and intracellular siderophores for iron storage and distribution in hyphae (Ferricrocin (FC)) or in conidia (hydroxyferricrocin (HFC)). The first stage of siderophores biosynthesis consists in hydroxylation of ornithine catalyzed by SidA. Schrettl *et al.* showed that $\Delta sidA$ led to avirulence of the strain in mice [105,106] while Slater *et al.* found concordant results in *G. mellonella*, regardless of the mutant inoculated dose [107]. Other genes implicated in both pathways of siderophores biosynthesis, like *sidC* (intracellular siderophore) and *sidD* or *sidF* (extracellular siderophores), have also been tested in rodent or *G. mellonella* models (Figure 4). The $\Delta sidF$, $\Delta sidD$, and $\Delta sidC$ mutants induce reduced virulence in mice [106] and in *G. mellonella* model [107] (Figure 4). In mice as in *G. mellonella* model, deletion of genes coding for the first steps of the siderophore biosynthesis pathway could have a big effect on the virulence of *A. fumigatus*. However, deleting genes encoding for late-stage mechanisms had no such effect due to the presence of alternative pathways (Table 3).

Johns *et al.* showed that PptA, a putative 4'-phosphopantetheinyl transferase (4'-PPTase), has a non-redundant role in the production of different secondary metabolites, like gliotoxin, DHN-melanin, and siderophores (TAFC and FC) [108]. The PptA null mutant ($\Delta PptA$) is avirulent in *G. mellonella* larvae and in both bronchopulmonary and disseminated murine infection models (Figure 4).

In fungi, siderophores are absorbed by siderophore-specific transmembrane transporters, siderophore iron transporter (SIT), a subgroup within the major facilitating superfamily (MFS) [109]. Of those SITs, two have been distinguished for their role in mediating TAFC uptake (MirB) or in intracellular siderophore biosynthesis (MirC) (Figure 4) [110]. When $\Delta mirC$ mutant was inoculated in *G. mellonella* in an iron-poor environment, production of ferricrocin (intracellular siderophore) and virulence decreased [111]. These results confirm the involvement of MirC in the regulation of iron metabolism and its implication in the pathogenicity in *G. mellonella*.

Although most of the key steps of siderophore biosynthesis were studied in *G. mellonella* model (Figure 4),

highlighting its importance and its implication in the fungal pathogenicity, many of this metal transporters in *A. fumigatus* have not been characterized yet. Other genes involved in the homeostasis of nutrients have been studied and shown their importance in *A. fumigatus* virulence in *G. mellonella* model (Table 3) [112].

Comparison between *G. mellonella* and murine models

To validate the *G. mellonella* model, several authors compared the results on *G. mellonella* with those on the murine model, with, in most cases, a good correlation. For fungal analysis, studies of virulence factors of *Mucor circinelloides* [71], *Fusarium species* [56], and *Candida albicans* [113] were compared in both *G. mellonella* and mice, showing that genes activated to yield full virulence in larvae and in immunodepleted mice were the same. The results are comparable. On the other hand, Amorim-Vaz *et al.* examined transcription factors involved in virulence of *C. albicans* by comparison of the two models [20]. They considered *G. mellonella* as a useful model even though there was only 50% concordance between results in mice and *G. mellonella* larvae. Interestingly, another publication found discrepancy of pathogenicity of strains of *C. albicans* [103]. In our review and by analyzing mutants from *A. fumigatus* in *G. mellonella*, it is important to note that in consistency with Amorim-Vaz *et al.* about half of the comparisons showed good correlation. All these results support the presence of similitudes in the mechanisms of fungal infection between the rodent and *G. mellonella* models, but the discrepancies suggest that the lack of adaptive immune system in the larvae disrupts the perfect alignment between the two model types. Although most data are well correlated between the two models, in mammals, results can be different because of the interaction with a more complex immune system than in insect.

Conclusion

Larvae of *G. mellonella* present several interesting criteria that encourage researchers to use it as an *in vivo* model, hence the increased number of publications on molecules or pathogens that have been tested on larvae in recent years. The possibility of conducting large-scale studies using this mini-host model makes it a powerful tool; however, many teams have noticed that different outstanding parameters may modify the larval immune response and thus influence the results of experimental infection. It

is important to remedy these issues with standardization of study design, which has started to develop recently. Additionally, complete sequencing of the genome will open the door wide for further research using this model.

Thanks to similarities between mammal and insect innate immune systems, *G. mellonella* could be used to understand infection mechanisms and to assess virulence of different pathogens, including fungi, especially *A. fumigatus*. The latter is one of the most pathogenic fungi against which researchers endeavor to identify new therapeutic targets, as this is becoming one of the public health issues of particular concern. Studying *A. fumigatus* isolates' pathogenicity is necessary by analyzing the production of their arsenal of secondary metabolites or say virulence factors via the strategy of gene disruption. In the last 5 years, several studies have explored the impact of metals like iron, and the production of mycotoxin or proteins on their virulence in *G. mellonella* model. From this review, it appears that *A. fumigatus* can produce a vast array of active biomolecules and virulence factors that could enhance its pathogenicity. Some signaling pathways were almost entirely studied in the larvae, which proves the high interest of utilizing them to initiate large-scale pre-screening protocols, conducted in mammals, for the identification of potential therapeutic drugs, in compliance with the 3Rs.

To conclude, the *G. mellonella* model, by all its advantageous characteristics, proven its utility to study host-pathogen interactions, particularly for *A. fumigatus*. It can serve as a fast, simple, and low-cost pre-screening model to complete data before using a mammalian model, in a medical field where a great part of progress is necessary to optimize patient management.

Acknowledgments

We thank Dr Suhad Assad for her critical linguistic reviewing.

Disclosure statement

All authors report no conflict of interest relevant to this study.

ORCID

Françoise Botterel  <http://orcid.org/0000-0002-3028-2665>

References

- [1] Scully LR, Bidochka MJ. Developing insect models for the study of current and emerging human pathogens. *FEMS Microbiol Lett.* 2006;263(1):1–9.
- [2] Hardin-Pouzet H, Morosan S. Organismes-modèles et réglementation de la recherche animale. *Med Sci (Paris).* 2019;35(2):153–156.
- [3] Lionakis MS. *Drosophila* and *Galleria* insect model hosts. *Virulence.* 2011;2(6):521–527.
- [4] Arvanitis M, Glavis-Bloom J, Mylonakis E. Invertebrate models of fungal infection. *Biochim Biophys Acta.* 2013;1832(9):1378–1383.
- [5] Mylonakis E, Casadevall A, Ausubel FM. Exploiting amoeboid and non-vertebrate animal model systems to study the virulence of human pathogenic fungi. *PLoS Pathog.* 2007;3(7):e101.
- [6] Chamilos G, Lionakis MS, Lewis RE, et al. Role of mini-host models in the study of medically important fungi. *Lancet Infect Dis.* 2007;7(1):42–55.
- [7] Fuchs BB, Mylonakis E. Using non-mammalian hosts to study fungal virulence and host defense. *Curr Opin Microbiol.* 2006;9(4):346–351.
- [8] Jemel S, Julien V, Billaud E, et al. Apport du modèle invertébré *Galleria mellonella* pour évaluer l'efficacité des antifongiques dans l'aspergillose invasive. *Société Française de Mycologie Médicale;* 2018.
- [9] Kwadha CA, Ong'amo GO, Ndegwa PN, et al. The biology and control of the greater wax moth, *Galleria mellonella*. *Insects.* 2017;8(2):61.
- [10] Junqueira JC. *Galleria mellonella* as a model host for human pathogens. *Virulence.* 2012;3(6):474–476.
- [11] Champion OL, Wagley S, Titball RW. *Galleria mellonella* as a model host for microbiological and toxin research. *Virulence.* 2016;7(7):840–845.
- [12] Cook SM, McArthur JD. Developing *Galleria mellonella* as a model host for human pathogens. *Virulence.* 2013;4(5):350–353.
- [13] Kavanagh K, Reeves EP. Exploiting the potential of insects for *in vivo* pathogenicity testing of microbial pathogens. *FEMS Microbiol Lett.* 2004;28(1):101–112.
- [14] Tsai CJY, Loh JMS, Proft T. *Galleria mellonella* infection models for the study of bacterial diseases and for antimicrobial drug testing. *Virulence.* 2016;7(3):214–229.
- [15] Singkum P, Suwanmanee S, Pumeesat P, et al. A powerful *in vivo* alternative model in scientific research: *Galleria mellonella*. *Acta Microbiol Immunol Hung.* 2019;66(1):31–55.
- [16] Trevijano-Contador N, Zaragoza O. Immune response of *Galleria mellonella* against human fungal pathogens. *J Fungi (Basel).* 2018;5:1.
- [17] Ellis JD, Graham JR, Mortensen A. Standard methods for wax moth research. *J Apic Res.* 2015;52(1):1–17.
- [18] Ramarao N, Nielsen-Leroux C, Lereclus D. The insect *Galleria mellonella* as a powerful infection model to investigate bacterial pathogenesis. *J Vis Exp.* 2012;70:e4392.
- [19] Lange A, Beier S, Huson DH, et al. Genome sequence of *Galleria mellonella* (greater wax moth). *Genome Announc.* 2018;6(2):17–1220.
- [20] Amorim-Vaz S, Delarze E, Ischer F, et al. Examining the virulence of *Candida albicans* transcription factor mutants using *Galleria mellonella* and mouse infection models. *Front Microbiol.* 2015;6:367.
- [21] Eisenman HC, Duong R, Chan H, et al. Reduced virulence of melanized *Cryptococcus neoformans* in *Galleria mellonella*. *Virulence.* 2014;5(5):611–618.
- [22] Champion OL, Titball RW, Bates S. Standardization of *G. mellonella* larvae to provide reliable and reproducible results in the study of fungal pathogens. *J Fungi.* 2018;4(3):840–845.
- [23] Desbois AP, McMillan S. Paving the way to acceptance of *Galleria mellonella* as a new model insect. *Virulence.* 2015;6(5):410–411.
- [24] Borman AM. Of mice and men and larvae: *Galleria mellonella* to model the early host-pathogen interactions after fungal infection. *Virulence.* 2017;9(1):9–12.
- [25] Binder U, Maurer E, Lass-Flörl C. *Galleria mellonella*: an invertebrate model to study pathogenicity in correctly defined fungal species. *Fungal Biol.* 2016;120(2):288–295.
- [26] Fallon J, Kelly J, Kavanagh K. *Galleria mellonella* as a model for fungal pathogenicity testing. *Methods Mol Biol.* 2012;845:469–485.
- [27] Fuchs BB, O'Brien E, El Khoury JB, et al. Methods for using *Galleria mellonella* as a model host to study fungal pathogenesis. *Virulence.* 2010;1(6):475–482.
- [28] Kavanagh K, Fallon JP. *Galleria mellonella* larvae as models for studying fungal virulence. *Fungal Biol Rev.* 2010;24(1–2):79–83.
- [29] Melloul E, Roisin L, Durieux MF, et al. Interactions of *Aspergillus fumigatus* and *Stenotrophomonas maltophilia* in an *in vitro* mixed biofilm model: does the strain matter? *Front Microbiol.* 2018;9:2850.
- [30] Torres M, Pinzón EN, Rey FM, et al. *Galleria mellonella* as a Novelty *in vivo* model of host-pathogen interaction for *Malassezia furfur* CBS 1878 and *Malassezia pachydermatis* CBS 1879. *Front Cell Infect Microbiol.* 2020;10:199. PMID: 32432057
- [31] Malavia D, Gow NAR, Usher J. Advances in molecular tools and *in vivo* models for the study of human fungal pathogenesis. In: *Microorganisms.* 2020 ;8(6):803
- [32] Firacative C, Khan A, Duan S, et al. Maintenance of *Galleria mellonella* and its application to study fungal virulence. *J Fungi.* 2020;6(3):130.
- [33] Armstead J, Morris J, Denning DW. Multi-country estimate of different manifestations of aspergillosis in cystic fibrosis. *PLoS One.* 2014;9:6.
- [34] He H, Jiang S, Zhang L, et al. *Aspergillus* tracheobronchitis in critically ill patients with chronic obstructive pulmonary diseases. *Mycoses.* 2014;57(8):473–482.
- [35] Saunders RV, Modha DE, Claydon A, et al. Chronic *Aspergillus fumigatus* colonization of the pediatric cystic fibrosis airway is common and may be associated with a more rapid decline in lung function. *Med Myco.* 2016 Jul 1;54(5) :537–543.
- [36] Jemel S, Guillot J, Kallel K, et al. *Galleria mellonella* for the evaluation of antifungal efficacy against medically important fungi, a narrative review. *Microorganisms.* 2020;8:3.
- [37] Piatek M, Sheehan G, Kavanagh K. Utilising *Galleria mellonella* larvae for studying *in vivo* activity of

- conventional and novel antimicrobial agents. *Pathog Dis.* 2020;79:59.
- [38] Jorjão AL, Oliveira LD, Scorzoni L, et al. From moths to caterpillars: ideal conditions for *Galleria mellonella* rearing for in vivo microbiological studies. *Virulence.* 2018;9(1):383–389.
- [39] Krams I, Kecko S, Kangassalo K, et al. Effects of food quality on trade-offs among growth, immunity and survival in the greater wax moth *Galleria mellonella*. *Insect Sci.* 2015;22(3):431–439.
- [40] Engel P, Moran NA. The gut microbiota of insects - diversity in structure and function. *FEMS Microbiol Rev.* 2013;37(5):699–735.
- [41] Brown SE, Howard A, Kasprzak AB, et al. A peptidomics study reveals the impressive antimicrobial peptide arsenal of the wax moth *Galleria mellonella*. *Insect Biochem Molec.* 2009;39(11):792–800.
- [42] Bolouri Moghaddam MR, Tonk M, Schreiber C, et al. The potential of the *Galleria mellonella* innate immune system is maximized by the co-presentation of diverse antimicrobial peptides. *Biol Chem.* 2016;397(9):939–945.
- [43] Wojda I. Immunity of the greater wax moth *Galleria mellonella*: *galleria mellonella* immunity. *Insect Sci.* 2017;24(3):342–357.
- [44] Tojo S, Naganuma F, Arakawa K, et al. Involvement of both granular cells and plasmatocytes in phagocytic reactions in the greater wax moth, *Galleria mellonella*. *J Insect Physiol.* 2000 Jul;46(7):1129–1135.
- [45] Bergin D, Reeves EP, Renwick J, et al. Superoxide production in *Galleria mellonella* hemocytes: identification of proteins homologous to the NADPH oxidase complex of human neutrophils. *Infect Immun.* 2005;73(7):4161–4170.
- [46] Whitten MMA, Tew IF, Lee BL, et al. A novel role for an insect apolipoprotein (Apolipoprotein III) in -1,3-glucan pattern recognition and cellular encapsulation reactions. *J Immunol.* 2004;172(4):2177–2185.
- [47] Fallon JP, Reeves EP, The KK. *Aspergillus fumigatus* toxin fumagillin suppresses the immune response of *Galleria mellonella* larvae by inhibiting the action of haemocytes. *Microbiology.* 2011;157(5):1481–1488.
- [48] Reeves EP, Messina CGM, Doyle S, et al. Correlation between gliotoxin production and virulence of *Aspergillus fumigatus* in *Galleria mellonella*. *Mycopathologia.* 2004;158(1):73–79.
- [49] Sheehan G, Farrell G, Kavanagh K. Immune priming: the secret weapon of the insect world. *Virulence.* 2020 Feb 21;11(1):238–246.
- [50] Chertkova EA, Grizanov EV, Dubovskiy IM. Bacterial and fungal infections induce bursts of dopamine in the haemolymph of the Colorado potato beetle *Leptinotarsa decemlineata* and greater wax moth *Galleria mellonella*. *J Invertebr Pathol.* 2018;153:203–206.
- [51] Wang J, Ying SH, Hu Y, et al. Mas5, a homologue of bacterial DnaJ, is indispensable for the host infection and environmental adaptation of a filamentous fungal insect pathogen: role of Mas5 in an insect pathogen. *Environ Microbiol.* 2016;18(3):1037–1047.
- [52] Scully LR, Bidochka MJ. Serial passage of the opportunistic pathogen *Aspergillus flavus* through an insect host yields decreased saprobic capacity. *Can J Microbiol.* 2005;51(2):185–189.
- [53] Fedhila S, Buisson C, Dussurget O, et al. Comparative analysis of the virulence of invertebrate and mammalian pathogenic bacteria in the oral insect infection model *Galleria mellonella*. *J Invertebr Pathol.* 2010;103(1):24–29.
- [54] Salamitou S, Ramisse F, Brehélin M, et al. The plcR regulon is involved in the opportunistic properties of *Bacillus thuringiensis* and *Bacillus cereus* in mice and insects. *Microbiology.* 2000;146(11):2825–2832.
- [55] Dalton JP, Uy B, Swift S, et al. A novel restraint device for injection of *Galleria mellonella* larvae that minimizes the risk of accidental operator needle stick injury. *Front Cell Infect Microbiol.* 2017;7:99.
- [56] Navarro-Velasco GY, Prados-Rosales RC, Ortíz-Urquiza A, et al. *Galleria mellonella* as model host for the trans-kingdom pathogen *Fusarium oxysporum*. *Fungal Genet Biol.* 2011;48(12):1124–1129.
- [57] Harding CR, Schroeder GN, Collins JW, et al. Use of *Galleria mellonella* as a model organism to study *Legionella pneumophila* infection. *J Vis Exp.* 2013;81:e50964.
- [58] Jia X, Zhang X, Hu Y, et al. Role of downregulation and phosphorylation of cofilin in polarized growth, MpkA activation and stress response of *Aspergillus fumigatus*. *Front Microbiol.* 2018;9:2667.
- [59] Long N, Orasch T, Zhang S, et al. The Zn2Cys6-type transcription factor LeuB cross-links regulation of leucine biosynthesis and iron acquisition in *Aspergillus fumigatus*. *PLoS Genet.* 2018;14(10):e1007762.
- [60] Özkan S, Coutts RHA. *Aspergillus fumigatus* mycovirus causes mild hypervirulent effect on pathogenicity when tested on *Galleria mellonella*. *Fungal Genet Biol.* 2015;76:20–26.
- [61] Pereira Silva L, Alves de Castro P, Dos Reis TF, et al. Genome-wide transcriptome analysis of *Aspergillus fumigatus* exposed to osmotic stress reveals regulators of osmotic and cell wall stresses that are SakA/HOG1 and MpkC dependent. *Cell Microbiol.* 2017;19:4.
- [62] Liu H, Gravelat FN, Chiang LY, et al. *Aspergillus fumigatus* AcuM regulates both iron acquisition and gluconeogenesis. *Mol Microbiol.* 2010;78(4):1038–1054.
- [63] Myers RR, Smith TD, ElSawa SF, et al. rtfA controls development, secondary metabolism, and virulence in *Aspergillus fumigatus*. *PLoS One.* 2017;12(4):e0176702.
- [64] Geißel B, Penka M, Neubauer M, et al. ER-mitochondria encounter structure contributes to hyphal growth, mitochondrial morphology and virulence of the pathogenic mold *Aspergillus fumigatus*. *Int J Med Microbiol.* 2017;307(1):37–43.
- [65] Schafferer L, Beckmann N, Binder U, et al. AmcA - a putative mitochondrial ornithine transporter supporting fungal siderophore biosynthesis. *Front Microbiol.* 2015;6:252.
- [66] Beckmann N, Schafferer L, Schrettl M, et al. Characterization of the link between ornithine, arginine, polyamine and siderophore metabolism in *Aspergillus fumigatus*. *PLoS One.* 2013;8(6):e67426.

- [67] Dietl AM, Binder U, Shadkchan Y, et al. Siroheme is essential for assimilation of nitrate and sulfate as well as detoxification of nitric oxide but dispensable for murine virulence of *Aspergillus fumigatus*. *Front Microbiol.* 2018;9:2615.
- [68] Zhang X, Jia X, Tian S, et al. Role of the small GTPase Rho1 in cell wall integrity, stress response, and pathogenesis of *Aspergillus fumigatus*. *Fungal Genet Biol.* 2018;120:30–41.
- [69] Juvvadi PR, Cole DC, Falloon K, et al. Kin1 kinase localizes at the hyphal septum and is dephosphorylated by calcineurin but is dispensable for septation and virulence in the human pathogen *Aspergillus fumigatus*. *Biochem Biophys Res Commun.* 2018;505(3):740–746.
- [70] Trieu TA, Navarro-Mendoza MI, Pérez-Arques C, et al. RNAi-based functional genomics identifies new virulence determinants in mucormycosis. *PLoS Pathog.* 2017;13(1):e1006150.
- [71] Loh JM, Adenwalla N, Wiles S, et al. *Galleria mellonella* larvae as an infection model for group A streptococcus. *Virulence.* 2013;4(5):419–428.
- [72] Perdoni F, Falleni M, Tosi D, et al. A histological procedure to study fungal infection in the wax moth *Galleria mellonella*. *Eur J Histochem.* 2014;58(3):2428.
- [73] Sheehan G, Clarke G, Kavanagh K. Characterisation of the cellular and proteomic response of *Galleria mellonella* larvae to the development of invasive aspergillosis. *BMC Microbiol.* 2018;18:63.
- [74] Kim Y, Heo IB, Yu JH, et al. Characteristics of a regulator of G-protein signaling (RGS) *rgsC* in *Aspergillus fumigatus*. *Front Microbiol.* 2017;8:2058.
- [75] Jung MG, Kim SS, Yu JH, et al. Characterization of *gprK* encoding a putative hybrid G-protein-coupled receptor in *Aspergillus fumigatus*. *PLoS One.* 2016;11(9):e0161312.
- [76] Aufauvre-Brown A, Brown JS, Holden DW. Comparison of virulence between clinical and environmental isolates of *Aspergillus fumigatus*. *Eur J Clin Microbiol Infect Dis.* 1998;17(11):778–780.
- [77] Amarsaikhan N, O’Dea EM, Tsoggerel A, et al. Isolate-dependent growth, virulence, and cell wall composition in the human pathogen *Aspergillus fumigatus*. *PLoS One.* 2014;9:6.
- [78] Mondon P, De Champs C, Donadille A, et al. Variation in virulence of *Aspergillus fumigatus* strains in a murine model of invasive pulmonary aspergillosis. *J Med Microbiol.* 1996;45(3):186–191.
- [79] Alshareef F, Robson GD. Genetic and virulence variation in an environmental population of the opportunistic pathogen *Aspergillus fumigatus*. *Microbiology.* 2014;160(4):742–751.
- [80] Ballard E, Melchers WJG, Zoll J, et al. In-host microevolution of *Aspergillus fumigatus*: a phenotypic and genotypic analysis. *Fungal Genet Biol.* 2018;113:1–13.
- [81] Cheema MS, Christians JK. Virulence in an insect model differs between mating types in *Aspergillus fumigatus*. *Med Mycol.* 2011;49(2):202–207.
- [82] Knox BP, Blachowicz A, Palmer JM, et al. Characterization of *Aspergillus fumigatus* isolates from air and surfaces of the international space station. In: *mSphere*. Vol. 1. Oct; 2016. p. 5.
- [83] Puértolas-Balint F, Rossen JWA, Oliveira Dos Santos C, et al. Revealing the virulence potential of clinical and environmental *Aspergillus fumigatus* isolates using whole-genome sequencing. *Front Microbiol* [Internet]. 2019 cited 2019 Nov 24;10. <https://www.frontiersin.org/articles/10.3389/fmicb.2019.01970/full>
- [84] Renshaw H, Vargas-Muñiz JM, Richards AD, et al. Distinct roles of myosins in *Aspergillus fumigatus* hyphal growth and pathogenesis. *Infect Immun.* 2016;84(5):1556–1564.
- [85] Steinbach WJ, Cramer RA, Perfect BZ, et al. Calcineurin controls growth, morphology, and pathogenicity in *Aspergillus fumigatus*. *Eukaryot Cell.* 2006;5(7):1091–1103.
- [86] Lu Z, Jia X, Chen Y, et al. Identification and characterization of key charged residues in the cofilin protein involved in azole susceptibility, apoptosis, and virulence of *Aspergillus fumigatus*. *Antimicrob Agents Chemother.* 2018;62(5):e01659–17.
- [87] Magnani Dinamarco T, Brown NA, Couto De Almeida RS, et al. *Aspergillus fumigatus* calcineurin interacts with a nucleoside diphosphate kinase. *Microbes Infect.* 2012;14(11):922–929.
- [88] Powers-Fletcher MV, Feng X, Krishnan K, et al. Deletion of the *sec4* homolog *srpA* from *Aspergillus fumigatus* is associated with an impaired stress response, attenuated virulence and phenotypic heterogeneity. *PLoS One.* 2013;8(6):e66741.
- [89] Lindsey R, Cowden S, Hernández-Rodríguez Y, et al. *AspC* are important for normal development and limit the emergence of new growth foci in the multicellular fungus *Aspergillus nidulans*. *Eukaryot Cell.* 2010;9(1):155–163.
- [90] Hernández-Rodríguez Y, Hastings S, Momany M. The septin *AspB* in *Aspergillus nidulans* forms bars and filaments and plays roles in growth emergence and conidiation. *Eukaryot Cell.* 2012;11(3):311–323.
- [91] Vargas-Muñiz JM, Renshaw H, Richards AD, et al. The *Aspergillus fumigatus* septins play pleiotropic roles in septation, conidiation, and cell wall stress, but are dispensable for virulence. *Fungal Genet Biol.* 2015;81:41–51.
- [92] Gerhards N, Neubauer L, Tudzynski P, et al. Biosynthetic pathways of ergot alkaloids. *Toxins (Basel).* 2014;6(12):3281–3295.
- [93] Raffa N, Keller NP. A call to arms: mustering secondary metabolites for success and survival of an opportunistic pathogen. *PLoS Pathog.* 2019;15(4):e1007606.
- [94] Dagenais TRT, Keller NP. Pathogenesis of *Aspergillus fumigatus* in invasive aspergillosis. *Clin Microbiol Rev.* 2009;22(3):447–465.
- [95] Smith TD, Calvo AM. The *mtfA* transcription factor gene controls morphogenesis, gliotoxin production, and virulence in the opportunistic human pathogen *Aspergillus fumigatus*. *Eukaryot Cell.* 2014;13(6):766–775.
- [96] Jackson JC, Higgins LA, Lin X. Conidiation color mutants of *Aspergillus fumigatus* are highly pathogenic to the heterologous insect host *Galleria mellonella*. *PLoS One.* 2009;4(1):e4224.
- [97] Fallon JP, Troy N, Kavanagh K. Pre-exposure of *Galleria mellonella* larvae to different doses of

- Aspergillus fumigatus* conidia causes differential activation of cellular and humoral immune responses. *Virulence*. 2011;2(5):413–421.
- [98] Jia X, Zhang X, Hu Y, et al. Role of actin depolymerizing factor cofilin in *Aspergillus fumigatus* oxidative stress response and pathogenesis. *Curr Genet*. 2018;64(3):619–634.
- [99] Kim Y, Lee MW, Jun SC, et al. RgsD negatively controls development, toxigenesis, stress response, and virulence in *Aspergillus fumigatus*. *Sci Rep*. 2019;9:811.
- [100] O'Hanlon KA, Gallagher L, Schrettl M, et al. Nonribosomal peptide synthetase genes *pesL* and *pes1* are essential for fumigaclavine C production in *Aspergillus fumigatus*. *Appl Environ Microbiol*. 2012;78(9):3166–3176.
- [101] Reeves EP, Reiber K, Neville C, et al. A nonribosomal peptide synthetase (*Pes1*) confers protection against oxidative stress in *Aspergillus fumigatus*. *Febs J*. 2006;273(13):3038–3053.
- [102] Panaccione DG, Arnold SL. Ergot alkaloids contribute to virulence in an insect model of invasive aspergillosis. *Sci Rep*. 2017;7(1):8930.
- [103] Schrettl M, Bignell E, Kragl C, et al. Siderophore biosynthesis but not reductive iron assimilation is essential for *Aspergillus fumigatus* virulence. *J Exp Med*. 2004;200(9):1213–1219.
- [104] Schrettl M, Bignell E, Kragl C, et al. Distinct roles for intra- and extracellular siderophores during *Aspergillus fumigatus* infection. *PLoS Pathog*. 2007;3(9):e128.
- [105] Slater JL, Gregson L, Denning DW, Warn PA. Pathogenicity of *Aspergillus fumigatus* mutants assessed in *Galleria mellonella* matches that in mice. *Med Mycol*. 2011;49(S1):S107–13.
- [106] Johns A, Scharf DH, Gsaller F, et al. A nonredundant phosphopantetheinyl transferase, PptA, is a novel antifungal target that directs secondary metabolite, siderophore, and lysine biosynthesis in *Aspergillus fumigatus* and is critical for pathogenicity. *mBio*. 2017;8(4):1504–1516.
- [107] Haas H. Iron – a key nexus in the virulence of *Aspergillus fumigatus*. *Front Microbiol*. 2012;3:28.
- [108] Blatzer M, Latgé J-P. Metal-homeostasis in the pathobiology of the opportunistic human fungal pathogen *Aspergillus fumigatus*. *Curr Opin Microbiol*. 2017;40:152–159.
- [109] Mulvihill ED, Moloney NM, Owens RA, et al. Functional investigation of iron-responsive microsomal proteins, including *MirC*, in *Aspergillus fumigatus*. *Front Microbiol*. 2017;8:418.
- [110] Bakti F, Sasse C, Heinekamp T, et al. Heavy metal-induced expression of *PcaA* provides cadmium tolerance to *Aspergillus fumigatus* and supports its virulence in the *Galleria mellonella* model. *Front Microbiol*. 2018;9:744.
- [111] Brennan M, Thomas DY, Whiteway M, et al. Correlation between virulence of *Candida albicans* mutants in mice and *Galleria mellonella* larvae. *FEMS Immunol Med Microbiol*. 2002;34(2):153–157.